



### Heavy-duty ejectors

Vacuum generation for use under harsh operating conditions



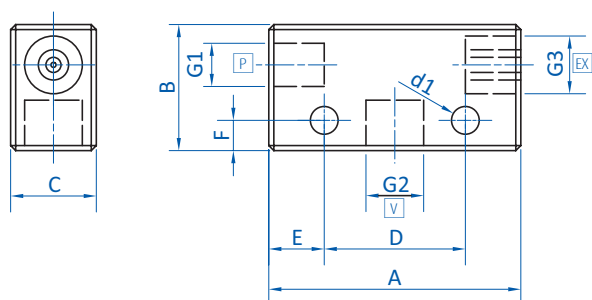
#### Product notes

- > Robust and compact aluminum housing
- > Compensation of compressed air fluctuations between 3 and 6 bar (43.5 and 87 psi)
- > Additional inlet for blow-off for fast product release or vacuum switch connection for process monitoring (65.111, 65.130)
- > Rectangular design enables block assembly in centralized or decentralized vacuum systems

#### Technical data

Item no.	Optimal operating pressure [bar (psi)]	Max. operating pressure [bar (psi)]	Final vacuum [%]	Suction power [Nl/min]	Air consumption to 4 bar (58 psi) [Nl/min]	Evacuation time 0 to 70 % [s/l]	Weight [g]	Suitable accessories
65.102A	4 (58)	6 (87)	85	30	50	3.5	48	Silencer: 72.001 Silencer: 72.029

#### Dimensions



65.102A

P = Compressed air connection (P) V = Vacuum connection Ex = Exhaust B = Blow-off (65.111 and 65.130)

Item no.	G1	G2	G3	G4	G5	A [mm]	B [mm]	C [mm]	D [mm]	d1 [mm]	E [mm]	F [mm]
65.102A	G1/8	G1/4	G1/4	--	--	50	25	17	28	5.5	11	6