

rtc[®]

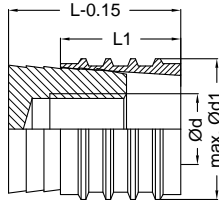
QUICK CONNECT TECHNOLOGY



rtc type BC

Threadless Pressure Plug - Verschlussstopfen ohne Gewinde
Interchangeability - Austauschbar mit HASCO Z 942

- 1 - Material: MS58 Brass - Messing
- 2 - Material: Stainless Steel - Edelstahl

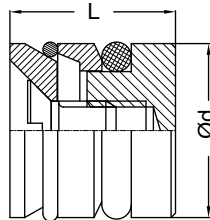


Order No / Bestellnr.	Ød	Ød1	L	L1	Package Pcs.
BC - 06	M3	6	11.5	8	25
BC - 07	M3	7	11.5	8	25
BC - 08	M4	8	11.5	8	25
BC - 10	M6	10	14	10	25
BC - 12	M6	12	14	10	15
BC - 14	M8	14	17	12	15
BC - 15	M8	15	17	12	15
BC - 16	M8	16	17	12	15
BC - 20	M8	20	17	12	15

rtc type BCO

Threadless Pressure Plug - Verschlussstopfen ohne Gewinde
Interchangeability - Austauschbar mit EOC KN / 105

- Material: MS58
- Brass - Messing
- O-Ring: Viton
- Max. Temp: 200 °C

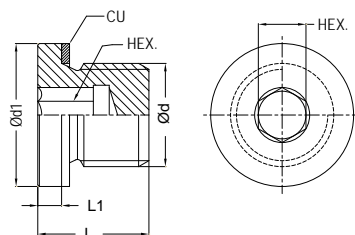


Order No / Bestellnr.	Ød	L	Package Pcs.
BCO - 06	6	10	10
BCO - 07	7	10	10
BCO - 08	8	10	10
BCO - 8.5	8.5	10	10
BCO - 10	10	10	10
BCO - 10.5	10.5	10	10
BCO - 11	11	10	10
BCO - 11.5	11.5	10	10
BCO - 12	12	10	10
BCO - 14	14	10	10
BCO - 15	15	12	10
BCO - 16	16	12	10
BCO - 20	20	12	10
BCO - 23	23	12	10
BCO - 24	24	21.5	10
BCO - 25	25	21.5	10
BCO - 30	30	21.5	10

rtc type PPD

Pressure plugs with copper washer - Verschlussstopfen mit Kupferscheibe

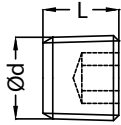
Material: MS 58 (Brass) - Messing (DIN 908)



Order No / Bestellnr.	Ød	Ød1	L	L1	HEX.
PPD 10	BSP 1/8	14	11	3	5
PPD 13	BSP 1/4	18	15	3	6
PPD 17	BSP 3/8	22	15	3	8
PPD 21	BSP 1/2	24	18	4	10
PPD 26	BSP 3/4	32	20	5	12
PPD 33	BSP 1	39	21	5	17
PPD 1010	M10x1	14	11	3	5
PPD 1215	M12x1.5	17	15	3	6
PPD 1415	M14x1.5	19	15	3	6
PPD 1615	M16x1.5	21	15	3	8
PPD 2215	M22x1.5	27	18	4	10
PPD 2415	M24x1.5	30	18	4	12

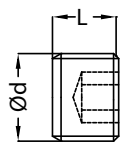
Pressure plug with conical thread DIN 906 / Verschlussstopfen mit konischem Gewinde DIN 906

TYPE PPR - PPK **rtc**

Pressure Plug	Order No / Bestellnr.	Ød	L	HEX.
Material: MS 58 (Brass) - Messing 	PPR 10	BSPT 1/8	8	5
	PPR 13	BSPT 1/4	10	7
	PPR 17	BSPT 3/8	10	8
	PPR 21	BSPT 1/2	10	10
	PPK 0875	M8x075	8	4
	PPK 1010	M10x1	8	5
	PPK 1215	M12x1.5	8	6
	PPK 1415	M14x1.5	10	7

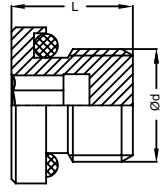
Pressure plug with parallel thread DIN 906 / Verschlussstopfen zylindrischem Gewinde DIN 906

TYPE PPG - PPM **rtc**

Pressure Plug	Order No / Bestellnr.	Ød	L	HEX.
Material: MS 58 (Brass) - Messing 	PPG 10	BSP 1/8	8	5
	PPG 13	BSP 1/4	10	7
	PPG 17	BSP 3/8	10	8
	PPG 21	BSP 1/2	10	10
	PPM 0875	M8x075	8	4
	PPM 1010	M10x1	8	5
	PPM 1215	M12x1.5	8	6
	PPM 1415	M14x1.5	10	7


Pressure plug with O-ring DIN 908 / Verschlussstopfen mit O-ring DIN 908

TYPE PPO **rtc**

Pressure Plug	Order No / Bestellnr.	Ød	L	INNER HEX.
Material: MS 58 (Brass) - Messing 	PPO 10	BSP 1/8	9	5
	PPO 13	BSP 1/4	14	6
	PPO 17	BSP 3/8	16	8
	PPO 21	BSP 1/2	18	10
	PPO 26	BSP 3/4	20	12
	PPO 33	BSP 1	22	14
	PPO 42	BSP 1-1/4	24	16
	PPO 48	BSP 1-1/2	26	18
	PPO 60	BSP 2	28	20


Hose Clamps / Schlauchschellen

TYPE CPW2 **rtc**

Hose Clamps	Order No / Bestellnr.	Hose Outer Diameter Range (mm) / (inch)		Quantity Pack
Material: Screw - DIN 1132 Zinc Plated Steel Housing - AISI 430 (DIN 1.4016 Stainless Steel) Band - AISI 430 (DIN 1.4016 Stainless Steel) 	CPW2 - 1016 - 09	10 - 16	3/8 - 5/8	100
	CPW2 - 1220 - 09	12 - 20	1/2 - 3/4	100
	CPW2 - 1222 - 09	12 - 22	1/2 - 7/8	100
	CPW2 - 1627 - 09	16 - 27	5/8 - 1-1/16	
	CPW2 - 2032 - 09	20 - 32	3/4 - 1-1/4	
	CPW2 - 2540 - 09	25 - 40	1 - 1-5/8	

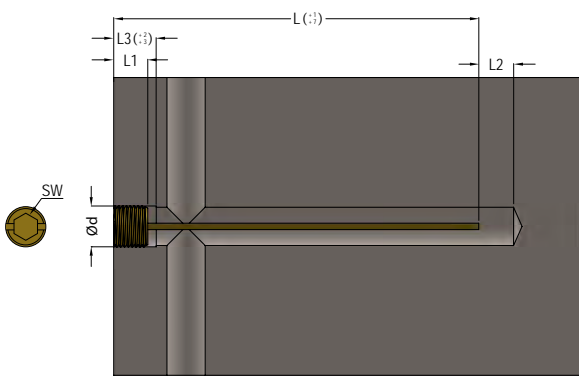
Hose Clamps / Schlauchschellen

TYPE CPE **rtc**

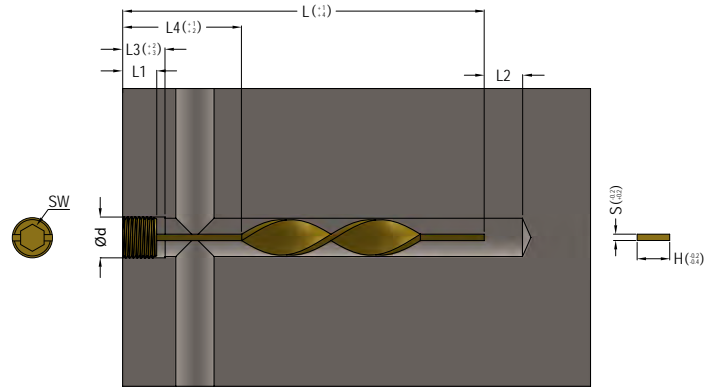
Hose Clamps	Order No / Bestellnr.	Hose Diameter (mm)	Quantity Pack
Material: W1 - DIN 1.0330 Mild Steel 	CPE - 1315	13-15	100
	CPE - 1417	14-17	100
	CPE - 1518	15-18	100
	CPE - 1720	17-20	100
	CPE - 1821	18-21	100

Straight and Turbo Buffles

TYPE SBM / TBM 



Straight Buffle



Turbo Buffle



Please kindly add "T" at the end of the product code for Pre-Sealed Thread
 Example Code: TBM 10-100T

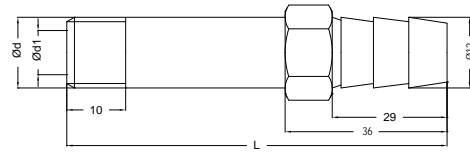
Straight and Turbo Buffles

TYPE SBM / TBM 

Order No / Bestellnr.		Ød	Ød1	L	L1	L2	L3	L4	H	S	SW
Straight Buffle	Turbo Buffle										
SBM 10-100	TBM 10-100	BSP 1/8	8.5	100	8	8	10	50	8.5	1.6	5
SBM 10-200	TBM 10-200	BSP 1/8	8.5	200	8	8	10	100	8.5	1.6	5
SBM 13-125	TBM 13-125	BSP 1/4	11.5	125	10	11	13	50	11.5	2.4	7
SBM 13-250	TBM 13-250	BSP 1/4	11.5	250	10	11	13	100	11.5	2.4	7
SBM 17-150	TBM 17-150	BSP 3/8	15	150	10	15	17	50	15	2.4	8
SBM 17-300	TBM 17-300	BSP 3/8	15	300	10	15	17	100	15	2.4	8
SBM 21-200	TBM 21-200	BSP 1/2	18.5	200	10	18	20	75	18.5	2.4	10
SBM 21-400	TBM 21-400	BSP 1/2	18.5	400	10	18	20	125	18.5	2.4	10
SBM 26-300	TBM 26-300	BSP 3/4	23.5	300	12	23	25	100	23.5	3.2	12
SBM 26-500	TBM 26-500	BSP 3/4	23.5	500	12	23	25	150	23.5	3.2	12
SBM 08075-100	TBM 08075-100	M8x0.75	6	100	8	6	8	50	6	1.6	4
SBM 08075-200	TBM 08075-200	M8x0.75	6	200	8	6	8	100	6	1.6	4
SBM 1010-100	TBM 1010-100	M10x1.0	8	100	8	8	10	50	8	1.6	5
SBM 1010-200	TBM 1010-200	M10x1.0	8	200	8	8	10	100	8	1.6	5
SBM 1215-125	TBM 1215-125	M12x1.5	10	125	8	10	12	50	10	2.4	6
SBM 1215-250	TBM 1215-250	M12x1.5	10	250	8	10	12	100	10	2.4	6
SBM 1415-150	TBM 1415-150	M14x1.5	12	150	10	12	14	50	12	2.4	6
SBM 1415-300	TBM 1415-300	M14x1.5	12	300	10	12	14	100	12	2.4	6
SBM 1615-150	TBM 1615-150	M16x1.5	14	150	10	14	16	50	14	2.4	8
SBM 1615-300	TBM 1615-300	M16x1.5	14	300	10	14	16	100	14	2.4	8
SBM 1815-150	TBM 1815-150	M18x1.5	16	150	10	16	18	50	16	2.4	8
SBM 1815-300	TBM 1815-300	M18x1.5	16	300	10	16	18	100	16	2.4	8
SBM 2015-150	TBM 2015-150	M20x1.5	18	150	10	18	20	50	18	2.4	10
SBM 2015-300	TBM 2015-300	M20x1.5	18	300	10	18	20	100	18	2.4	10
SBM 2420-150	TBM 2420-150	M24x2.0	20	150	12	20	22	50	20	3.2	12
SBM 2420-300	TBM 2420-300	M24x2.0	20	300	12	20	22	100	20	3.2	12

rtc TYPE SRM / SRG

Extension Plugs / Erweiterung Nippels



Order No / Bestellnr.	Ød	Ød1	L	HEX.
SRM 08 x 38	M 8x1.25	5	38	13
SRM 08 x 60	M 8x1.25	5	60	13
SRM 08 x 80	M 8x1.25	5	80	13
SRM 08 x 100	M 8x1.25	5	100	13
SRM 10 x 38	M 10x1.5	6	38	13
SRM 10 x 60	M 10x1.5	6	60	13
SRM 10 x 80	M 10x1.5	6	80	13
SRM 10 x 100	M 10x1.5	6	100	13
SRM 10 x 120	M 10x1.5	6	120	13
SRM 10 x 150	M 10x1.5	6	150	13
SRM 12 x 38	M 12x1.75	7	38	13
SRM 12 x 60	M 12x1.75	7	60	13
SRM 12 x 80	M 12x1.75	7	80	13
SRM 12 x 100	M 12x1.75	7	100	13
SRM 12 x 120	M 12x1.75	7	120	13
SRM 12 x 150	M 12x1.75	7	150	13
SRM 14 x 38	M 14x2.0	7	38	14

Order No / Bestellnr.	Ød	Ød1	L	HEX.
SRG 10 x 38	BSP 1/8	6	38	13
SRG 10 x 60	BSP 1/8	6	60	13
SRG 10 x 80	BSP 1/8	6	80	13
SRG 10 x 100	BSP 1/8	6	100	13
SRG 10 x 120	BSP 1/8	6	120	13
SRG 10 x 150	BSP 1/8	6	150	13
SRG 13 x 38	BSP 1/4	8	38	14
SRG 13 x 60	BSP 1/4	8	60	14
SRG 13 x 80	BSP 1/4	8	80	14
SRG 13 x 100	BSP 1/4	8	100	14
SRG 13 x 120	BSP 1/4	8	120	14
SRG 13 x 150	BSP 1/4	8	150	14

rtc TYPE FHE

Extension hose stems / Schlauchtülleverlängerung



Adapter



Order No / Bestellnr.	Ød	Ød1	Ød2	L	L1	HEX.
FHE 9-120 HT2	10	9	6	120	22.5	11
FHE 13-150 HT2	14	13	9	150	25	15

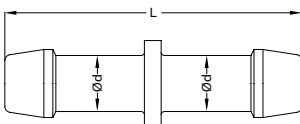
rtc TYPE HHN

Hose to Hose adapter



Adapter

Material: MS 58 (Brass) - Messing



Order No / Bestellnr.	Ød	L
HHN 04 HT-6	4	50
HHN 06 HT-6	6	50
HHN 08 HT-6	8	50
HHN 09 HT-6	9	50
HHN 10 HT-6	10	50
HHN 13 HT-6	13	58
HHN 16 HT-6	16	58
HHN 19 HT-6	19	75
HHN 25 HT-6	25	85

rtc TYPE FHNN

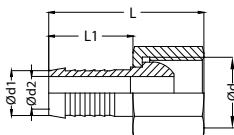
Standard hose connection with outer cone DIN 3863 and hex nut
Standard Schlauchtülle mit Überwurfmutter - Nippel mit Außenkonus DIN 3863



Adapter

Material: MS 58 (Brass) - Messing

Plate: Nickel




Order No / Bestellnr.	Ød	Ød1	Ød2	L	L1	HEX.
FHNN 13-09 HT2	BSP 1/4	9	6	40	22.5	17
FHNN 17-13 HT2	BSP 3/8	13	9	41	22.5	21
FHNN 26-19 HT2	BSP 3/4	19	13	52	32	32
FHNN 1415-09 HT2	M14x1.5	9	6	40	22.5	17
FHNN 1615-13 HT2	M16x1.5	13	9	41	22.5	21
FHNN 2415-19 HT2	M24x1.5	19	13	52	32	30



Elbow 90° / Winkel 90°


TYPE EBFM 90 **rtc**

Adapter	Order No / Bestellnr.	Connection	
		Male	Female
	EBFM 10 - 90	BSP 1/8	BSP 1/8
	EBFM 13 - 90	BSP 1/4	BSP 1/4
	EBFM 17 - 90	BSP 3/8	BSP 3/8
	EBFM 21 - 90	BSP 1/2	BSP 1/2
	EBFM 26 - 90	BSP 3/4	BSP 3/4
	EBFM 33 - 90	BSP 1	BSP 1
	EBFM 42 - 90	BSP 1-1/4	BSP 1-1/4
	EBFM 48 - 90	BSP 1-1/2	BSP 1-1/2
	EBFM 60 - 90	BSP 2	BSP 2



Elbow 45° / Winkel 45°

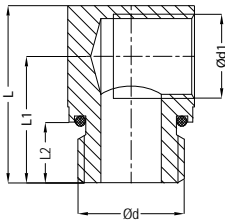
TYPE EBFM 45 **rtc**

Adapter	Order No / Bestellnr.	Connection	
		Male	Female
	EBFM 10 - 45	BSP 1/8	BSP 1/8
	EBFM 13 - 45	BSP 1/4	BSP 1/4
	EBFM 17 - 45	BSP 3/8	BSP 3/8
	EBFM 21 - 45	BSP 1/2	BSP 1/2
	EBFM 26 - 45	BSP 3/4	BSP 3/4
	EBFM 33 - 45	BSP 1	BSP 1
	EBFM 42 - 45	BSP 1-1/4	BSP 1-1/4
	EBFM 48 - 45	BSP 1-1/2	BSP 1-1/2
	EBFM 60 - 45	BSP 2	BSP 2



Male - Female thread adapters (90°) / Außen - Innengewinde Adapter (90°)

TYPE ELB **rtc**

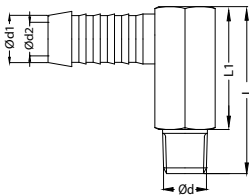
Adapter	Order No / Bestellnr.	Ød	Ød1	L	L1	L2	#
	ELB 13-10	BSP 1/4	BSP 1/8	25	17	9	15
	ELB 17-13	BSP 3/8	BSP 1/4	27.5	19	9	20
	ELB 21-17	BSP 1/2	BSP 3/8	35	25	15	25

Material: MS 58 (Brass) - Messing
Plate: Nickel



Male - Hose adapters (90°) / Aussengewinde Schauchanschluss Adapter (90°)

TYPE ELB **rtc**

Adapter	Order No / Bestellnr.	Ød	Ød1	Ød2	L	L1	HEX.
	MHN 10-09 HT-2 90	BSPT 1/8	9	6	27	20	15
	MHN 13-13 HT-2 90	BSPT 1/4	13	9	34	24	17
	MHN 21-19 HT-2 90	BSPT 1/2	19	13	47	32	24
	MHN 0875-09 HT-2 90	M8x0.75	9	4.5	27	20	15
	MHN 1010-09 HT-2 90	M10x1	9	6	27	20	15
	MHN 1415-13 HT-2 90	M14x1.5	13	9	34	24	17
	MHN 2415-19 HT-2 90	M24x1.5	19	13	47	32	24