



Nipper technology | Air nippers - manual and automatic operation

Air nippers for manual operation

Air nippers for manual operation

AIR NIPPERS FOR PLASTIC AND METAL



Product description

- > Manually operated air nippers with safety lever
- > Round shaped body with knurling for safe grip

Notes

- > GT-N20, N30 and N50 come with stopcock to lock compressed air supply

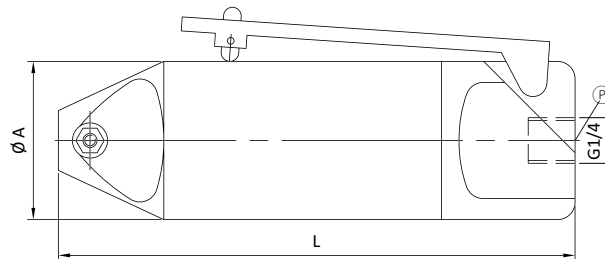
Ordering notes

- > Pressure booster to increase cutting force optional available

Technical data

Item no.	Max. cutting force [N]	Operating pressure [bar]	Height blade [mm]	Connection [G]	Weight [g]	Pressure amplifier	Dimensions	
							∅ A [mm]	L [mm]
GT-N3	294	4 - 5	7	G1/4	100	--	23	112
GT-N5	392	4 - 5	7	G1/4	140	--	30	103
GT-N7	490	4 - 5	9	G1/4	190	--	34	123
GT-N10	588	4 - 6	9	G1/4	200	P-10L (p.265)	34	132
GT-N12	735	5 - 6	12	G1/4	220	P-10L (p.265)	36	132
GT-N20	1.372	5 - 6	12	G1/4	430	P-20 (p.265)	45	156
GT-N30	2.744	5 - 6	17	G1/4	685	P-30 (p.265)	56	193
GT-N50	4.704	5 - 6	25.2	G1/4	1.22	P-50 (p.265)	75	237

Dimensions





Air nippers - automatic, round / square

AIR NIPPERS FOR PLASTIC AND METAL



Air nippers, round



Air nippers, square

Product description

- > Air nippers for EOAT robot arms or cutting stations
- > Round body can be mounted in any angle position
- > Square body comes with bore holes on five surfaces
- > Rear air connection can be rotated 180°

Notes

- > GT-NS20H-1: Air nipper with adjustable cutting opening

Ordering notes

- > Pressure booster to increase cutting force optional available

Technical data

Item no.	Housing	Max. cutting force [N]	Operating pressure [bar]	Height blade [mm]	Connection [G]	Accessories
GT-NR3	Round	294	4 - 5	7	G1/8	--
GT-NR5	Round	392	4 - 5	7	G1/8	--
GT-NR7	Round	490	4 - 5	9	G1/8	--
GT-NR10L	Round	588	4 - 6	12	G1/8	Mounting bracket GT-NR10H (p.296) Mounting bracket GT-NR10GR (p.299) Mounting bracket GT-NR10S (p.297) Mounting bracket GT-NR10ST2 (p.298) Pressure amplifier P-10L (p.265)
GT-NR20	Round	1.372	5 - 6	12	G1/8	Mounting bracket GT-NR20H (p.296) Mounting bracket GT-NR20S (p.297) Mounting bracket GT-NR20ST2 (p.298) Pressure amplifier P-20 (p.265)
GT-NR30	Round	2.744	5 - 6	17	G1/8	Mounting bracket GT-NR30H (p.296) Mounting bracket GT-NR30S (p.297) Mounting bracket GT-NR30ST2 (p.298) Pressure amplifier P-30 (p.265)
GT-NR50	Round	4.704	5 - 6	25.2	G1/4	Mounting bracket GT-NR50H (p.296) Mounting bracket GT-NR50ST2 (p.298) Pressure amplifier P-50 (p.265)
GT-NS2	Square	264	4 - 5	7	G1/8	--
GT-NS3	Square	294	4 - 5	7	G1/8	--
GT-NS5	Square	392	4 - 5	7	G1/8	--
GT-NS7	Square	490	4 - 5	9	G1/8	--
GT-NS10L	Square	588	4 - 6	12	G1/8	Pressure amplifier P-10L (p.265)
GT-NS20	Square	1.372	5 - 6	12	G1/8	Pressure amplifier P-20 (p.265)
GT-NS20H-1	Square	1.372	5 - 6	12	G1/8	Pressure amplifier P-20 (p.265)
GT-NS30	Square	2.744	5 - 6	17	G1/8	Pressure amplifier P-30 (p.265)



Nipper technology | Air nippers - stationary

Stationary air nippers - horizontal without lift

Stationary air nippers - horizontal without lift



AIR NIPPERS FOR PLASTIC AND METAL

Product description

- > Nippers, lightweight and compact, for easy installation in restricted spaces
- > To be used with cutting stations or automated equipment
- > Mounting holes at three sides

Notes

- > Max. blade opening and nipper length "K" refer to blades with index "AJ" resp. "RAJ"

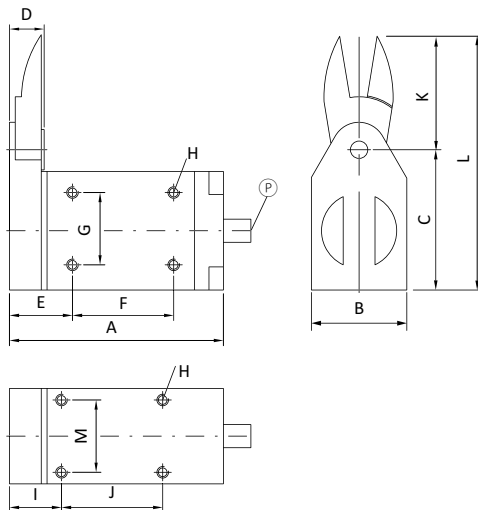
Ordering notes

- > Blades are not included in the scope of delivery. Please order separately.

Technical data

Item no.	Max. cutting force [N]	Operating pressure [bar]	Max. opening for cutting [mm]	Pipe connection [mm]	Weight [g]
GT-NF05	343	4 - 5	4	4	101
GT-NF10	490	4 - 5	6	4	143
GT-NF15	784	4 - 5	8	4	219

Dimensions



Ⓟ = Compressed air connection 4 mm x 2.5 mm

Item no.	A [mm]	B [mm]	C [mm]	D [mm]	E [mm]	F [mm]	G [mm]	H	I [mm]	J [mm]	K [mm]	L [mm]	M [mm]
GT-NF05	59.9	23	39.5	8.6	25.9	17	26	M3	21.9	17	22	61.5	18
GT-NF10	65.1	28	43.5	8.8	27.1	20	30	M3.5	23.1	20	24	67.5	22
GT-NF15	73	33	48.5	10.2	29	25	34	M4	25	25	27	75.5	26



Stationary air nippers - horizontal with lift



Product description

- > Nippers, lightweight and compact, for easy assembly in restricted spaces
- > To be used with cutting stations or automated equipment
- > Lift single-acting with return spring
- > Horizontal, adjustable lift enables cutting flush to the workpiece
- > Connection via hose nipples or quick fittings

Notes

- > Version (-R): Pull lift models
- > All others: Push lift models
- > Max. opening width and length "K" refer to blades with index "AJ" or "RAJ"

Ordering notes

- > Blades are not included in the scope of delivery. Please order separately.

Technical data

Item no.	Max. cutting force [N]	Max. lift [mm]	Operating pressure [bar]	Pipe connection with hose nipple [mm]	Pipe connection with quick connect fittings [mm]	Weight [g]
GT-NY05	343	3	4 - 5	2.5	--	155
GT-NY05R	343	3	4 - 5	2.5	--	155
GT-NY05-4	343	3	4 - 5	--	4x2,5	155
GT-NY05R-4	343	3	4 - 5	--	4x2,5	155
GT-NY10	490	3	4 - 5	2.5	--	210
GT-NY10R	490	3	4 - 5	2.5	--	210
GT-NY10-4	490	3	4 - 5	--	4x2,5	210
GT-NY10R-4	490	3	4 - 5	--	4x2,5	210
GT-NY15	784	3	4 - 5	2.5	--	319
GT-NY15R	784	3	4 - 5	2.5	--	319
GT-NY15-4	784	3	4 - 5	--	4x2,5	319
GT-NY15R-4	784	3	4 - 5	--	--	319
GT-NY25	980	5	5 - 6	4	--	580
GT-NY25R	980	5	5 - 6	4	--	580
GT-NY25-6	980	5	5 - 6	--	6x4	580
GT-NY25R-6	980	5	5 - 6	--	6x4	580



Blades for plastic, Z shape



Product description

- > Blades with offset cutting edge for overcoming obstacles or for narrow sprues

Notes

- > AH: Standard blade
- > RAH: Reverse cutting edge, if cutting flush to workpiece with blade "AH" is not possible

Technical data

Item no.	Material	Max. cutting thickness [mm]		Weight [g]	Air nippers
		PP / PE	ABS		
NY05AH	Ferrous alloy	3	2	37	GT-NF05 (p.278) GT-NY05-4 (p.279) GT-NY05 (p.279)
NY05RAH	Ferrous alloy	3	2	31	GT-NF05 (p.278) GT-NY05R-4 (p.279) GT-NY05R (p.279)
NY10AH	Ferrous alloy	3.5	2.3	43	GT-NF10 (p.278) GT-NY10-4 (p.279) GT-NY10 (p.279)
NY10RAH	Ferrous alloy	3.5	2.3	40	GT-NF10 (p.278) GT-NY10R (p.279) GT-NY10R-4 (p.279)
NY15AH	Ferrous alloy	4	2.6	76	GT-NF15 (p.278) GT-NY15-4 (p.279) GT-NY15 (p.279)
NY15RAH	Ferrous alloy	4	2.6	52	GT-NF15 (p.278) GT-NY15R-4 (p.279) GT-NY15R (p.279)
NY25AH	Ferrous alloy	5	3.4	110	GT-NY25 (p.279) GT-NY25-6 (p.279)
NY25RAH	Ferrous alloy	5	3.4	89	GT-NY25 (p.279) GT-NY25R (p.279) GT-NY25R-6 (p.279)



Nippers for plastics - vertical, with lift



ADJUSTABLE BLADE OPENING AND REVERSABLE BLADES

Product description

- > Nippers, lightweight and compact, for easy assembly in confined spaces
- > To be used in cutting stations
- > Adjustable horizontal lift and maximum blade opening
- > Blades can be reversed to enable cutting flush to the workpiece

Notes

- > Max. opening width "l" refers to blades with index "AJ"

Ordering notes

- > Blades are not included in the scope of delivery. Please order separately.

Technical data

Item no.	Max. cutting force [N]	Max. opening for cutting [mm]	Lift [mm]	Effective direction	Operating pressure [bar]	Pipe connection with hose nipple [mm]	Pipe connection with quick connect fittings [mm]	Weight [g]
GT-NT03	147	1.5 - 3	0 - 3	Push	4 - 5	2.5	--	178
GT-NT03R	147	1.5 - 3	0 - 3	Pull	4 - 5	2.5	--	178
GT-NT03-4	147	1.5 - 3	0 - 3	Push	4 - 5	--	4x2,5	178
GT-NT03R-4	147	1.5 - 3	0 - 3	Pull	4 - 5	--	4x2,5	178
GT-NT05	196	3 - 6	0 - 3	Push	4 - 5	2.5	--	325
GT-NT05R	196	3 - 6	0 - 3	Pull	4 - 5	2.5	--	325
GT-NT05-4	196	3 - 6	0 - 3	Push	4 - 5	--	4x2,5	325
GT-NT05R-4	196	3 - 6	0 - 3	Pull	4 - 5	--	4x2,5	325
GT-NT10	441	4 - 7	0 - 3	Push	4 - 5	2.5	--	515
GT-NT10R	441	4 - 7	0 - 3	Pull	4 - 5	2.5	--	515
GT-NT10-6	441	4 - 7	0 - 3	Push	4 - 5	--	6x4	515
GT-NT10R-6	441	4 - 7	0 - 3	Pull	4 - 5	--	6x4	515
GT-NT20	931	4.5 - 9	0 - 8	Push	5 - 6	4	--	930
GT-NT20R	931	4.5 - 9	0 - 8	Pull	5 - 6	4	--	930
GT-NT20-6	931	4.5 - 9	0 - 8	Push	5 - 6	--	6x4	930
GT-NT20R-6	931	4.5 - 9	0 - 8	Pull	5 - 6	--	6x4	930



Blades for plastic, for vertical air nippers, straight



Product description

- > Straight blades that can be applied at the right angle to the gate
- > Models with a variety of cutting edges to cover different applications

Notes

- > AJ: Standard blade
- > AJT: Blade extra thin
- > AJL: Blade extra long to overcome distance between sprue and nipper
- > AJB: Brazed carbide tips for cutting hard plastics or plastics containing fiber glass, increased durability
- > AJH: Brazed high-speed steel tip for cutting hard plastic

Technical data

Item no.	Material	Max. cutting thickness [mm]		Weight [g]	Air nippers
		PP / PE	ABS		
NT03AJ	Ferrous alloy	1.5	1	20	GT-NT03 (p.287)
NT03AJT	Ferrous alloy	1.5	1	19	GT-NT03 (p.287)
NE05AJ	Ferrous alloy	2.5	1.5	35	GT-NT05 (p.287)
NT05AJ	Ferrous alloy	2.5	1.5	30	GT-NT05 (p.287)
NT05AJB	Sintered alloy	2.5	1.5	30	GT-NT05 (p.287)
NT05AJH	HSS steel	2.5	1.5	30	GT-NT05 (p.287)
NT05AJL	Ferrous alloy	2.5	1.5	39	GT-NT05 (p.287)
NT05AJT	Ferrous alloy	2.5	1.5	29	GT-NT05 (p.287)
NE10AJ	Ferrous alloy	3.5	2.3	70	GT-NT10 (p.287)
NT10AJ	Ferrous alloy	3.5	2.3	62	GT-NT10 (p.287)
NT10AJB	Sintered alloy	3.5	2.3	76	GT-NT10 (p.287)
NT10AJH	HSS steel	3.5	2.3	76	GT-NT10 (p.287)
NT10AJL	Ferrous alloy	3.5	2.3	62	GT-NT10 (p.287)
NT10AJT	Ferrous alloy	3.5	2.3	65	GT-NT10 (p.287)
NT20AJ	Ferrous alloy	5	3.4	120	GT-NT20 (p.287)
NT20AJB	Ferrous alloy	5	3.4	120	GT-NT20 (p.287)
NT20AJH	HSS steel	5	3.4	120	GT-NT20 (p.287)
NT20AJL	Ferrous alloy	5	3.4	114	GT-NT20 (p.287)



Blades for plastic, for vertical air nippers, nipper style



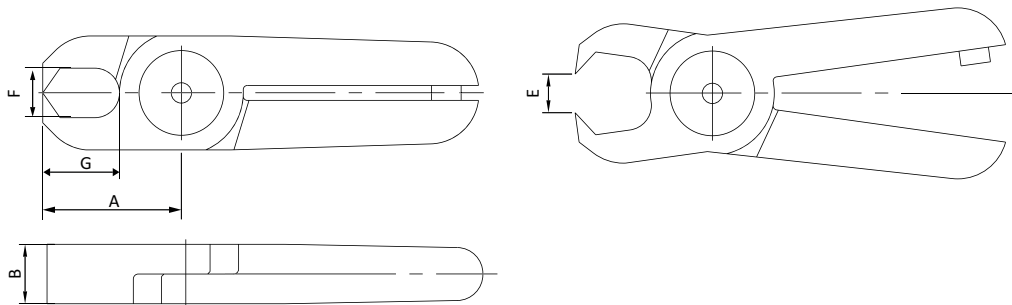
Product description

> Blades, nipper style, for universal cutting applications

Technical data

Item no.	Material	Max. cutting thickness [mm]		Weight [g]	Air nippers
		PP / PE	ABS		
NT05AE	Ferrous alloy	2.5	1.5	36	GT-NT05 (p.287)
NT10AE	Ferrous alloy	3.5	2.3	75	GT-NT10 (p.287)

Dimensions



Item no.	A [mm]	B [mm]	E [mm]	F [mm]	G [mm]
NT05AE	29	7	6	6	18
NT10AE	35	9	7	8	21.5



Nipper technology | Air shears

Special air shears - round / square, single-acting

Special air shears - round / square, single-acting



Product description

- > Pneumatic scissors for robots, cutting stations or manual operation
- > For precision cutting of kevlar, aramid, glass and carbon fiber

Notes

- > GT-H30, GT-HS30, GT-H12K: Designed to cut synthetic materials. Not suitable for thick cardboard, tin plate, wire, wood, etc.

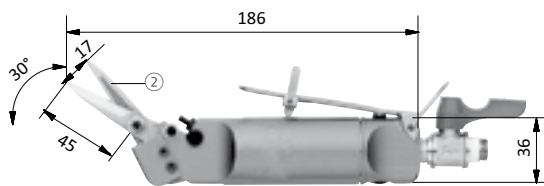
Ordering notes

- > Blades are not included in the scope of delivery. Please order separately.

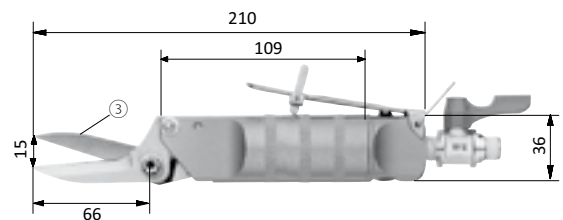
Technical data

Item no.	Housing	Operating pressure [bar]	Functional principle	Length incl. blade [mm]	Connection [G]	Max. cutting thickness [mm]		Weight [g]
						Kevlar	Band steel	
GT-H12K	Round	2	Manually	186	R1/8	0.3	--	290
GT-H120K	Round	5 - 6	Manually	211	R1/8	--	15x0.5	340
GT-H30	Round	3	Manually	280	R1/8	1	--	1,030
GT-HS30	Square	3	Automatically	260	R1/8	1	--	970

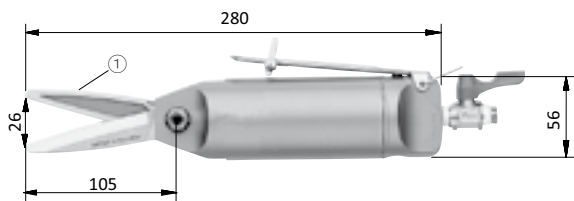
Dimensions



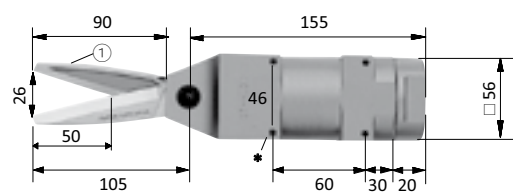
GT-H12K



GT-H120K



GT-H30



GT-HS30



Nipper technology | Air shears

Air shears - round / square, double-acting

Air shears - round / square, double-acting



FOR FAST CYCLE TIMES

Product description

- > Pneumatic scissors for robots, cutting stations or manual operation
- > Cutting of paper, film, steel or copper wire, etc.
- > Double-acting, separate control of opening and closing to enable short duty cycles
- > Continuous cutting process as no return spring required

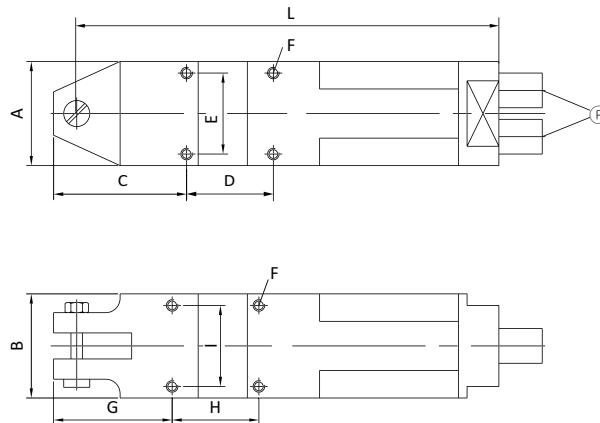
Ordering notes

- > Blades are not included in the scope of delivery. Please order separately.

Technical data

Item no.	Housing	Max. cutting force [N]	Operating pressure [bar]	Pipe connection [mm]	Weight [g]
GT-HWS1	Square	294	4 - 5	4	116
GT-HWR1	Round	294	4 - 5	4	84
GT-HWS10	Square	588	4 - 5	6	356
GT-HWR10	Round	588	4 - 5	6	295

Dimensions



Ⓟ = Compressed air connection

Item no.	A [mm]	B [mm]	C [mm]	D [mm]	E [mm]	F	G [mm]	H [mm]	I [mm]	L [mm]
GT-HWS1	20	23	--	--	--	M3	24	40	16	95
GT-HWR1	20	--	--	--	--	--	--	--	--	95
GT-HWS10	36	36	45.5	30	28	M4	41	30	28	146
GT-HWR10	36	--	--	--	--	--	--	--	--	146