

SELF-CLEAN FILTERS

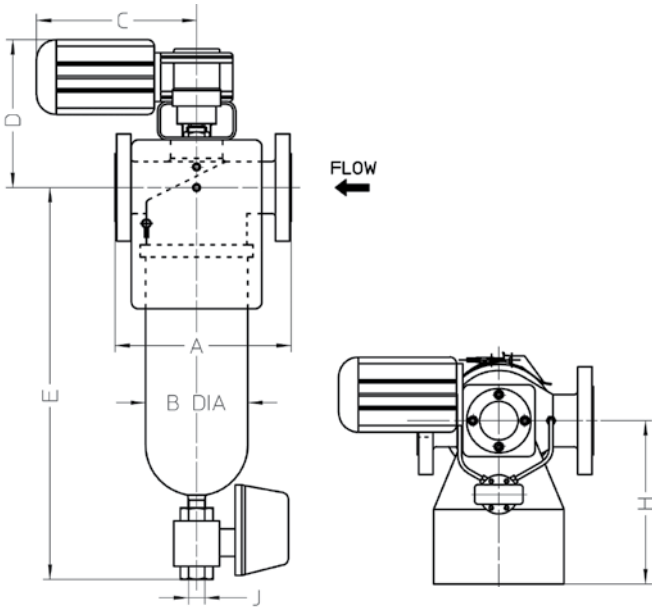


Benefits of Self-Clean Filters

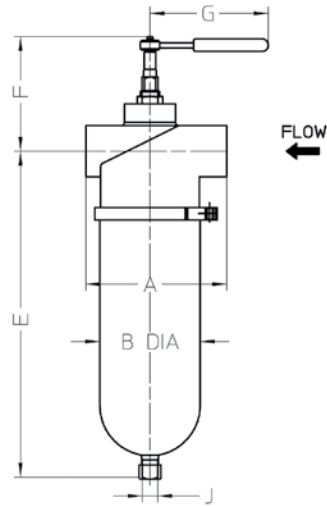
- Proporciona una solución de filtración eficiente para prácticamente cualquier fluido con la viscosidad de una resina viscoso espeso y adhesivo al agua.
- Elemento de limpieza sin interrumpir el flujo o la pérdida de presión del sistema Seguro o cualquier pérdida de líquidos.
- Sistema totalmente cerrado, sin contacto con el fluido del operador, por lo tanto ideal para aplicaciones peligrosas o sensibles y tambiénno hay posibilidad de contaminación introducida externamente en el producto.
- Limpia y el área de funcionamiento más seguro.
- Manual o un funcionamiento totalmente automático.
- Reduce los costes laborales asociados con los métodos de filtrado más tradicionales, como los tamices y filtros de mangas y también minimiza la producción de cualquier tiempo de inactividad.

TECHNICAL DATA

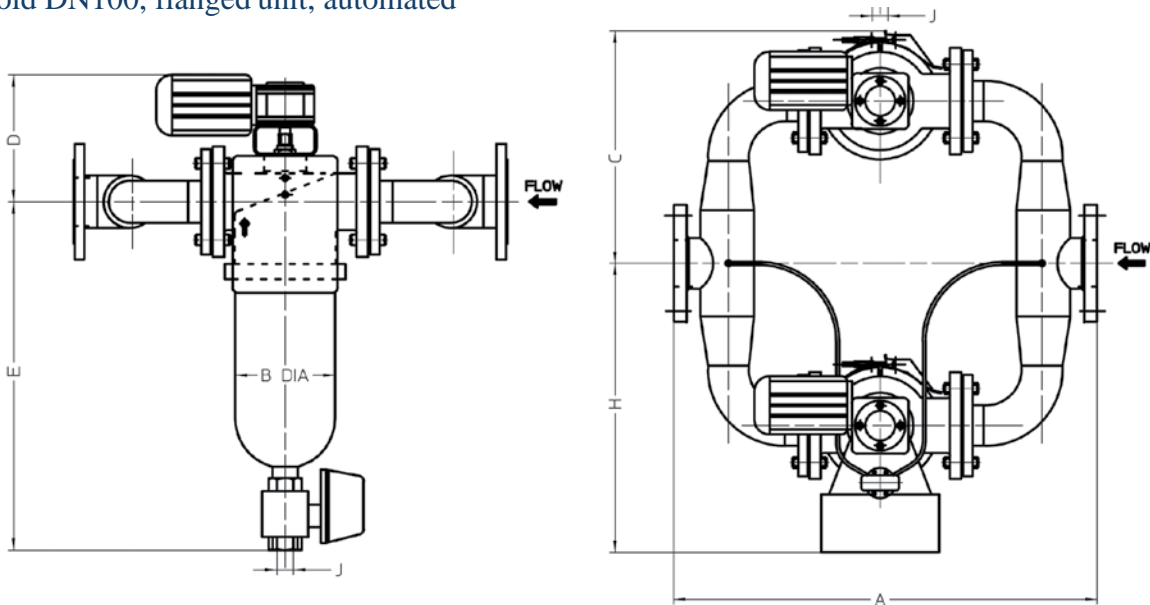
Flanged Filter, automated



Threaded Filter, manual



Manifold DN100, flanged unit, automated



Bore Size	Flanged Filters	Threaded Filters	Common Dimensions (mm)								Mass (dry) kg			
			A	A	B	C	D	E	F	G	H	J	Manual	Auto
DN40	} 290	220	157	260	245	555	150	185	250	3/4"	24	35	18	29
DN50														
DN65														
DN80	299	-	192	260	255	645	190	185	250	1.5"	50	55	-	-
DN100	430	-	280	350	380	880	295	510	300	1.5"	285	385	-	-
DN100M	825	-	190	450	255	645	190	185	570	1.5"	220	240	-	-

M = Manifold unit

info@hidrafluid.es

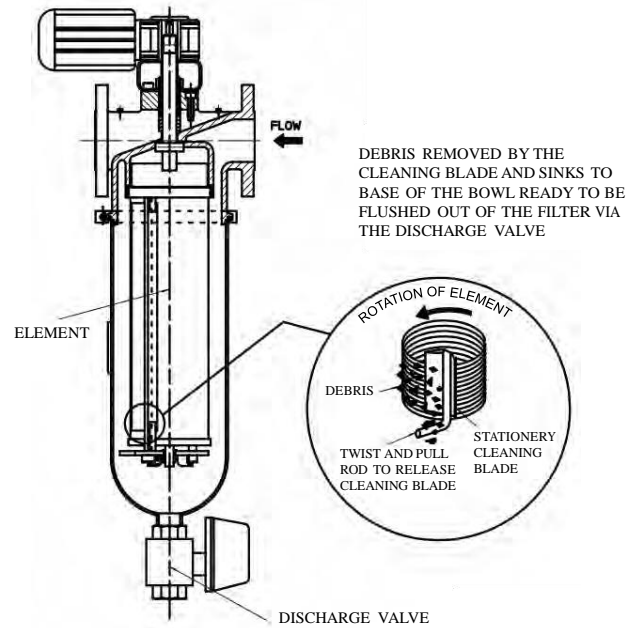
+34 976 24 32 10

RANGE & APPLICATIONS

Range

- 316 stainless steel wedge wire or perforated elements with filtration level from a coarse 6mm down to 50 micron and on some models 25 micron
- Available in cast iron, carbon steel or stainless steel. Other materials offered but not stocked
- Working pressure to 14 Barg (200psi) for the lower pressure range and up to 50 barg (725psi) for the higher pressure range*
- Manually cleaned by simply turning a ratchet handle or fully automated so no operator involvement is required
- High viscosity unit can feature reinforced elements and isolated pressure switch and heating jackets if required
- Unique twist and pull cam assembly so cleaning blades and element can be quickly and easily changed without tools

*Pressure stated at 50C. Pressure reduces with increasing temperature. We do not recommend the use of cast iron above 100C. For any application above 100C talk to our technical sales team. Max pressure on high pressure range specified to order.



Applications — Just a Few Examples

- Filtration of highly viscous epoxy and polyester resins during the manufacturing process
- Protection of a heat exchanger on sea water used for cooling
- Filtration of paints and varnishes replacing open sieves which can be subject to product contamination
- Replacing and extending the life of filter bags and cartridges in an ink manufacturing facility
- Replacing a basket strainer used for the filtration of flushing water on mechanical seals on pumps in the paper and pulp industry



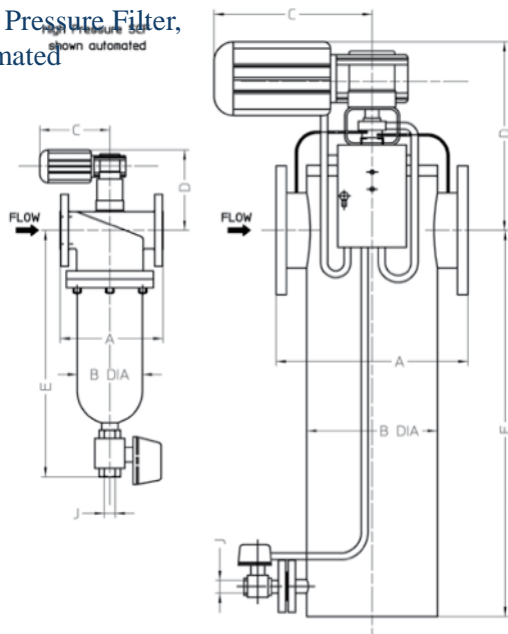
Viscosity (Centistokes)	Filtration Rating (microns)				
	50	100	200	500	1000
1	1.5	1.2	1.13	1.08	1.0
50	3.6	2.75	2.4	2.2	1.75
200	5	3.67	3.16	2.84	2.1
500	6.2	4.5	3.8	3.35	2.4
1000	7.6	6	5	3.9	3.6
5000	34	27	22	18	17

SELF-CLEAN FILTERS

The High Pressure Range

The higher pressure range is dimensionally and functionally similar to the low pressure range up to and including the DN80 model but features a flanged closure. Maximum pressures are specified to order.

High Pressure Filter, automated



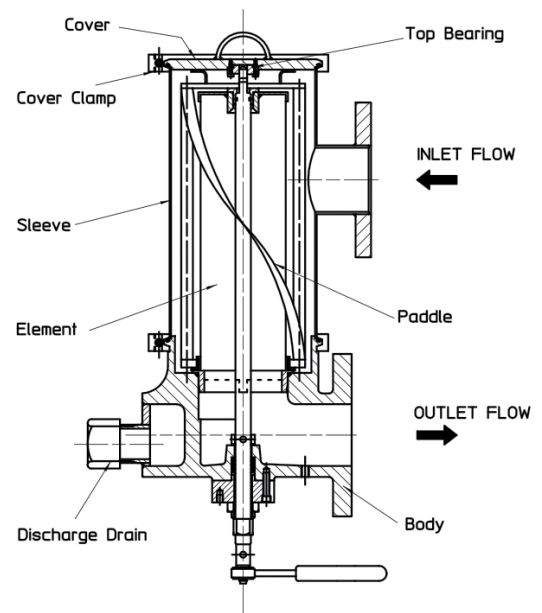
Bore Size	Common Dimensions (mm)						Mass (dry) kg	
	A	B	C	D	E	J	Manual	Auto
DN50S	270	157		245	445	3/4"	25	35
DN50	325		260		555		30	36
DN80	360			255	645		50	55
DN100M		190		450			220	240
DN100	550	280		380	880		285	385
DN150		406				1.1/2"	380	480
DN200	870	700		560	1170		850	1050
DN250	1000	800	345				1340	1640
DN300	1100	865					1830	2230

S = Threaded connections M = Manifold unit

The LPH Range

The LPH self-clean filter is ideally suited to those applications where regular stirring of fluid is beneficial and very low product loss is essential.

- Lift-out element and blade assembly for quick and easy change-over or cleaning
- Paddle stirs the fluid on the 'dirty' side of the element allowing agitation of the product and restricting build up of solids on the bowl
- Paddle directs the debris towards the discharge valve
- Optional paddle to stir the fluid on the 'clean' side of the element
- Self-draining at the end of a batch, minimising product losses
- Optional heating jacket
- High Pressure version available



SELF-CLEAN FILTERS



MAHLE

MAHLE

Industrial Filtration

