



Angle connectors for vacuum cups



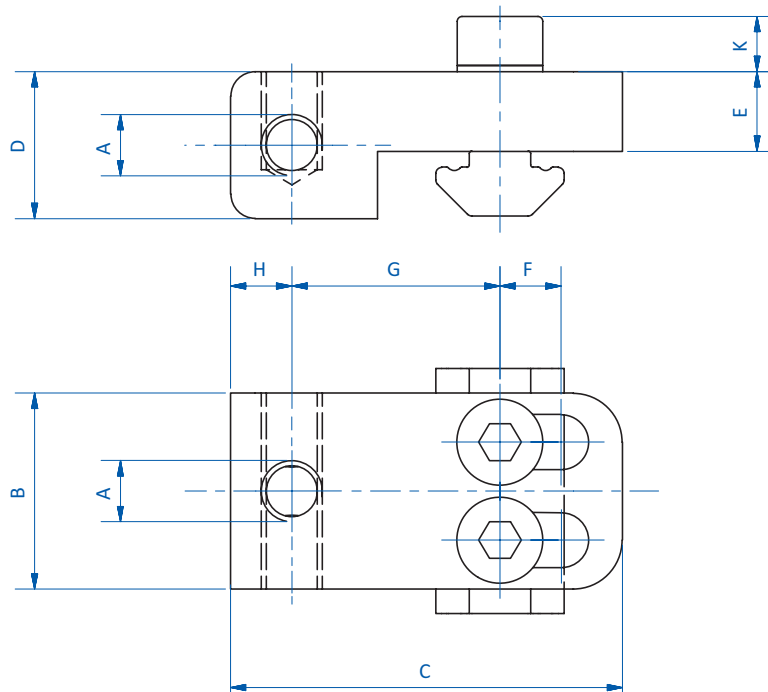
Product notes

- > Two vacuum ports
- > Slotted holes allow for use with profiles from 20 mm to 30 mm and 40 mm to 60 mm in size

Technical data

Item no.	Suitable for extrusion system	Weight [g]
GR-XL02.033	XLine	94

Dimensions



Item no.	A	B [mm]	C [mm]	D [mm]	E [mm]	F [mm]	G [mm]	H [mm]	K [mm]
GR-XL02.033	G1/4	30	60	20	10	10	29	11	8.8