



Profile connectors



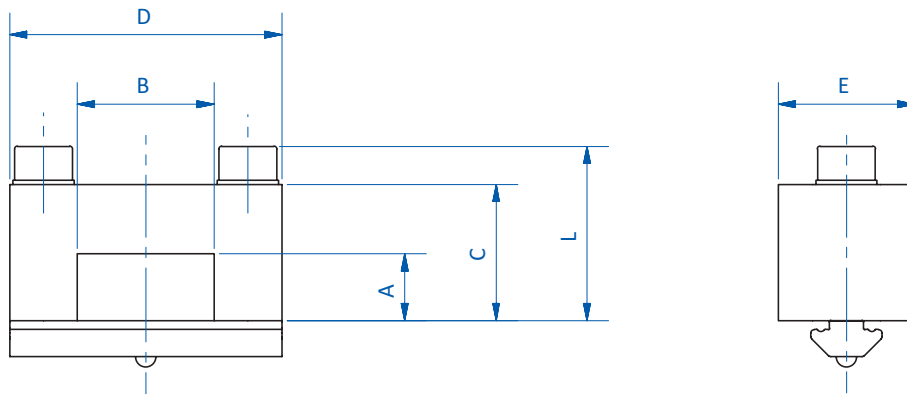
Product notes

- > Elements for 90° connection of two SLine extrusions
- > Extrusions can be moved in four directions after screws are loosened

Technical data

| Item no. | Suitable for extrusion system | Weight [g] |
|----------|-------------------------------|------------|
| GR01.032 | SLine | 72 |

Dimensions



| Item no. | A [mm] | B [mm] | C [mm] | D [mm] | E [mm] | L [mm] |
|----------|--------|--------|--------|--------|--------|--------|
| GR01.032 | 20 | 40 | 29.5 | 60 | 20 | 35 |