



### Profile connectors



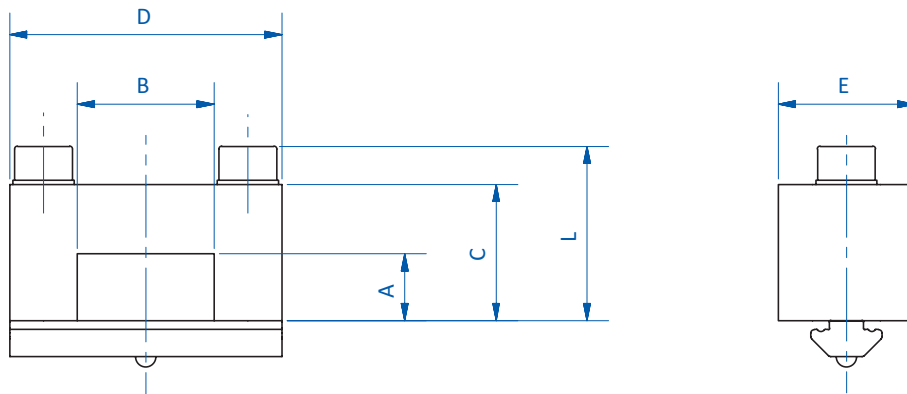
#### Product notes

- > Elements for 90° connection of two SLine extrusions
- > Extrusions can be moved in four directions after screws are loosened

#### Technical data

| Item no. | Suitable for extrusion system | Weight [g] |
|----------|-------------------------------|------------|
| GR01.040 | SLine                         | 50         |

#### Dimensions



| Item no. | A [mm] | B [mm] | C [mm] | D [mm] | E [mm] | L [mm] |
|----------|--------|--------|--------|--------|--------|--------|
| GR01.040 | 20     | 10     | 29.5   | 30     | 20     | 35     |