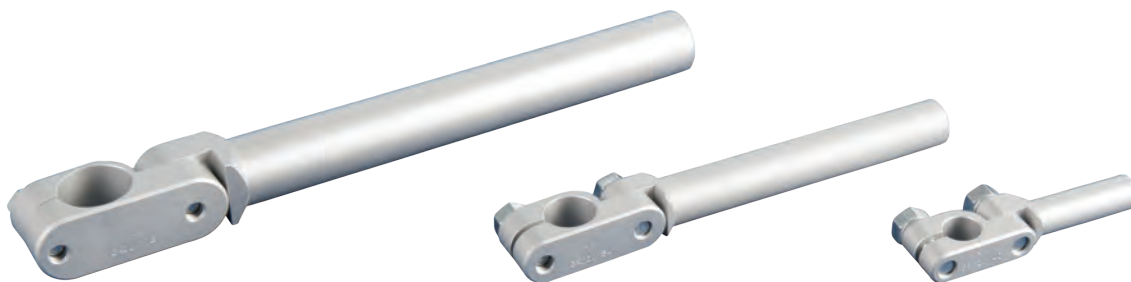




Gripper arms | Angle arms

Elbow arms – adjustable

Elbow arms – adjustable



Product notes

- > Components for mounting grippers, gripper fingers or gripper arms
- > Angle adjustment +/- 95°

Technical data

Item no.	Weight [g]
GR02.141	40

Dimensions

$\varnothing A$ [mm]	$\varnothing F$ [mm]	B [mm]	C [mm]	E [mm]	G [mm]	H [mm]	L [mm]
10	10	16	95.5	8.5	22	21.7	60

Dimensions

