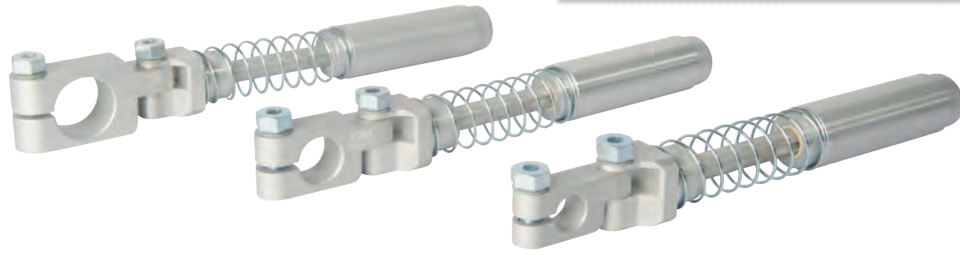




Elbow arms with sliding bush – spring compensated, adjustable and non-rotating

PRECISE FUNCTIONING EVEN UNDER HIGH LOAD



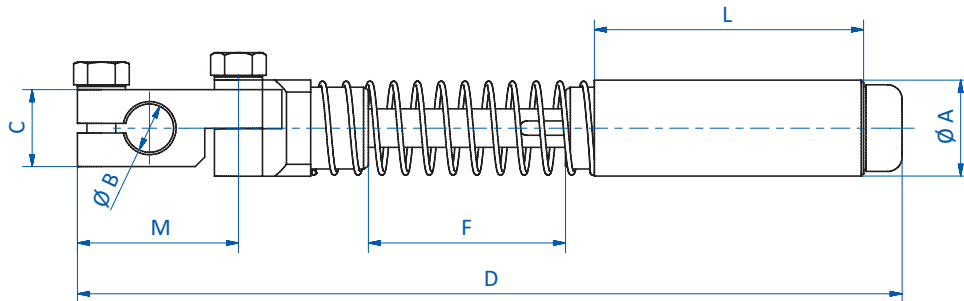
Product notes

- > Elements for connecting grippers
- > Guiding through sliding bushes for high precision by absorbing lateral forces and moments
- > Spring compensates for variation in ejection stroke

Technical data

| Item no. | Suitable for grippers with clamping \emptyset [mm] | Stroke [mm] | Weight [g] |
|----------|--|-------------|------------|
| GR03.202 | 10 | 40 | 104 |

Dimensions



| Item no. | $\emptyset A$ [mm] | $\emptyset B$ [mm] | C [mm] | D [mm] | F [mm] | L [mm] | M [mm] |
|----------|--------------------|--------------------|--------|--------|--------|--------|--------|
| GR03.202 | 20 | 10 | 16 | 171.5 | 40 | 55.5 | 33.5 |