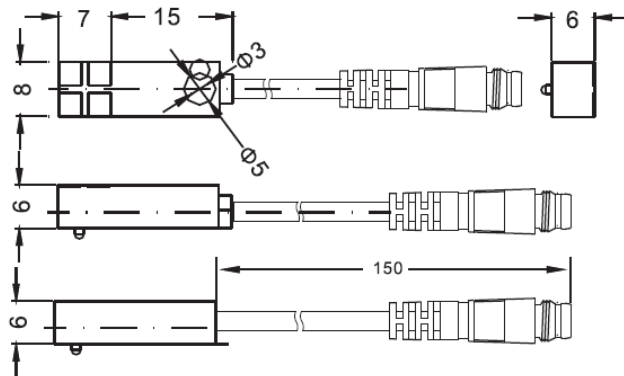


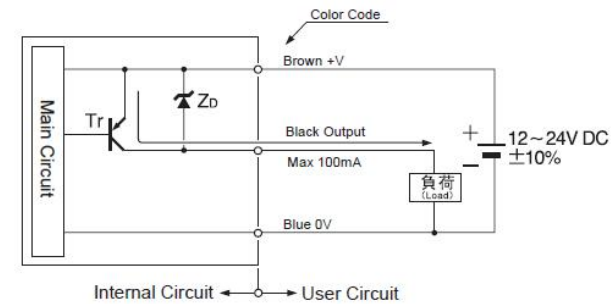
GR04.131-S1

Electro-magnetic sensor,
For sprue grippers

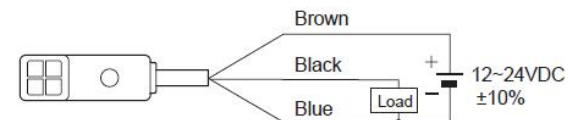
Response Frequency	DC:600Hz
Hysteresis	1%
Operating Voltage	DC:10~30VDC 10% floating
Current Consumption	DC: <3mA No-Load
Load Current	DC:30V 100mA Max
Leakage Current	DC: 1.1mA No-Load Max
Residual Voltage	DC: <1.0VDC No-load
Operating Temperature	-20℃~ +70℃
Material	
Wiring Method	φ3 150mm cable female connector
Protection Degree	IP67



PNP.NO/PNP.NC



Wiring Diagram



PINS

