



Series 140 - power grippers, clamping diameter 20 mm

DETECTS SPRUES LARGER 1 MM, SELF-CENTERING FACTORY SETTING



Product description

- > Grippers with high gripping force and narrow closing gap for flat sprues
- > Large area sensor activation, regardless of sprue position
- > Easy exchange of jaws without snap-rings
- > Body and jaws made of high-strength anodized aluminum alloy

Notes

- > If required, the grippers can be easily converted to non self-centering

Ordering notes

- > Included in scope of delivery
- > Sensor GR04.131-S1, resp. GR04.131-S2, cable 0.2 m, 3-pin M8 male plug
- > Extension cable 2 m, 3-pin M8 socket, free end

Technical data

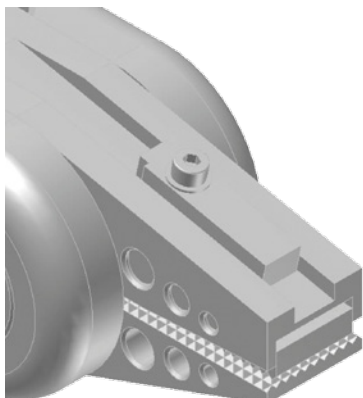
Item no.	Principle of operation	Medium	Operating pressure [bar]	Sensor	Closing force at 6 bar [N]	Weight [g]	Accessories
GR04.140A	Single-acting	Filtered and oiled / unoled air	2 - 8	--	380	395	--
GR04.140B	Single-acting	Filtered and oiled / unoled air	2 - 8	PNP	380	405	Connector cable 20.503 Sensor GR04.131-S1
GR04.140B/NPN	Single-acting	Filtered and oiled / unoled air	2 - 8	NPN	380	405	Connector cable 20.503 Sensor GR04.131-S2



Grippers | Sprue grippers

Series 140 - power grippers, clamping diameter 20 mm

Large area sensor activation

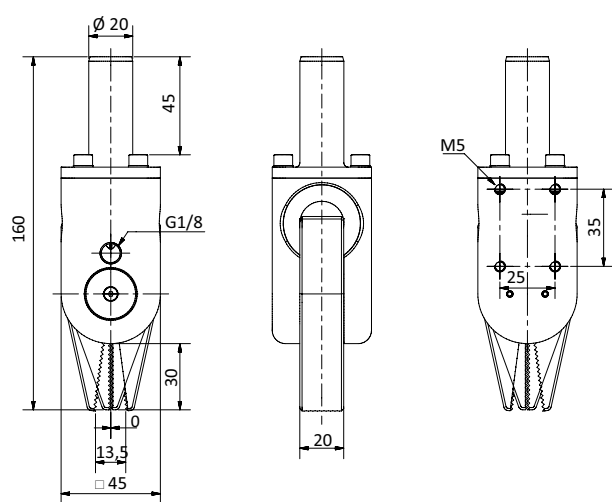


GR04.140B | GR04.140B/NPN

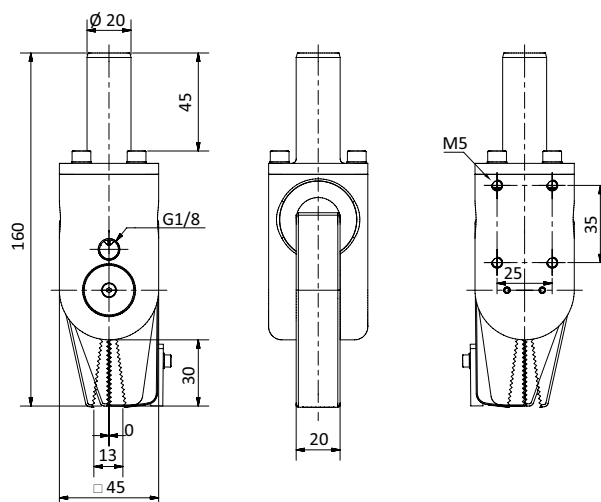
Installation example with side-mounted fitting



Dimensions



GR04.140A



GR04.140B | GR04.140B/NPN