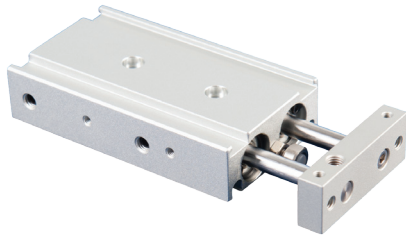


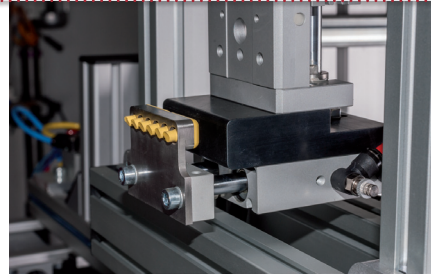
Linear technology | Dual-piston cylinders

Dual-piston cylinders – double-acting

Dual-piston cylinders – double-acting



HIGH PRECISION CYLINDER GUIDING, ANTI-TWIST PROTECTION



Combination of dual-piston cylinder and guide block

Product notes

- > Unit to precisely guide gripper components such as vacuum cups to the workpiece
- > Double-acting, separate compressed air connections for extraction and retraction
- > Sensors for optional detection of piston position (extracted/retracted)
- > PNP and NPN sensors:
 - C-slot (90° angle): GR04.202P, GR04.202N
 - C-slot (straight, short design): GR04.280P, GR04.280N
- > Medium: filtered and oiled/unoled air

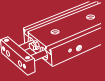
Technical data

Item no.
Compressed air connection
Operating pressure [bar (psi)]
Piston diameter [mm]
Stroke [mm]
Operating temperature [°C (°F)]
Weight [g]
Suitable sensors

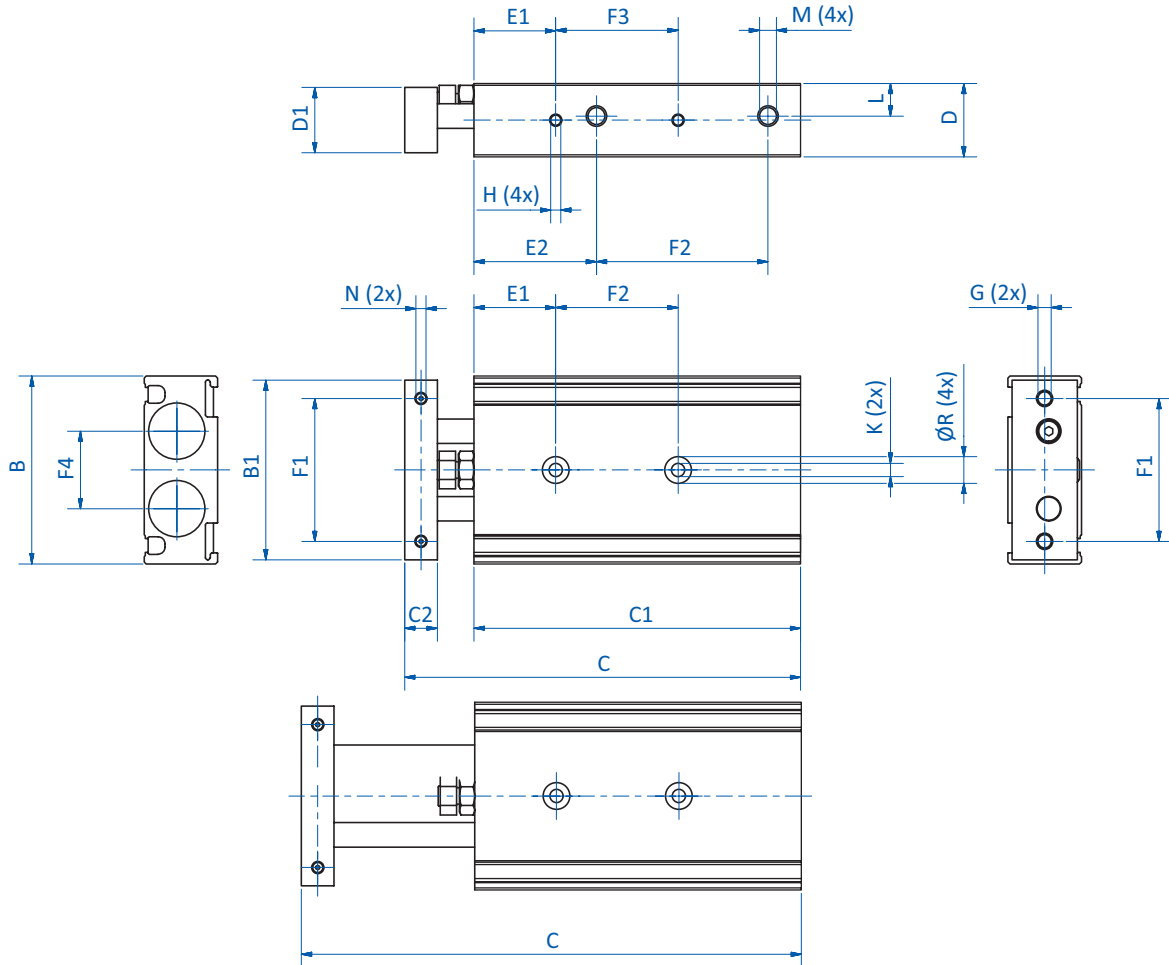
GR07.116-25	GR07.116-50	GR07.116-75	GR07.116-100
M5	M5	M5	M5
1 - 7 (14.5 - 101.5)	1 - 7 (14.5 - 101.5)	1 - 7 (14.5 - 101.5)	1 - 7 (14.5 - 101.5)
16	16	16	16
25	50	75	100
-5 - 70 (23 - 158)	-5 - 70 (23 - 158)	-5 - 70 (23 - 158)	-5 - 70 (23 - 158)
290	360	435	510
GR04.202N GR04.202P GR04.280N GR04.280P	GR04.202N GR04.202P GR04.280N GR04.280P	GR04.202N GR04.202P GR04.280N GR04.280P	GR04.202N GR04.202P GR04.280N GR04.280P

Theoretical cylinder force depending on the working pressure

Working pressure [bar]	Cylinder force [N]	
	GR07.116-xx	
	Move out	Move in
1	35.5	25
1.5	53	38
2	70.5	50.5
3	106	75.5
4	141	101
5	176.5	126
6	212	151
7	247	176.5



Dimensions



① = Compressed air connection M5

Item no.
L [mm]
B [mm]
B1 [mm]
C [mm]
C1 [mm]
C2 [mm]
D [mm]
D1 [mm]
E1 [mm]
E2 [mm]
F1 [mm]
F2 [mm]
F3 [mm]
F4 [mm]
G
H
K
M
N
Ø R

GR07.116-25	GR07.116-50	GR07.116-75	GR07.116-100
9.5	9.5	9.5	9.5
58	58	58	58
58	58	58	58
104 - 129	129 - 179	154 - 229	179 - 279
85	110	135	160
10	10	10	10
20	20	20	20
18	18	18	18
30	30	30	30
38.5	38.5	38.5	38.5
45	45	45	45
38.5	63.5	88.5	114
25	35	45	55
25	25	25	25
M5x0.8	M5x0.8	M5x0.8	M5x0.8
M4x5	M4x5	M4x5	M4x5
M5	M5	M5	M5
M5	M5	M5	M5
M4x6	M4x6	M4x6	M4x6
8x4,4	8x4,4	8x4,4	8x4,4