



## Air shears – round/square, double-acting



FOR FAST CYCLE TIMES

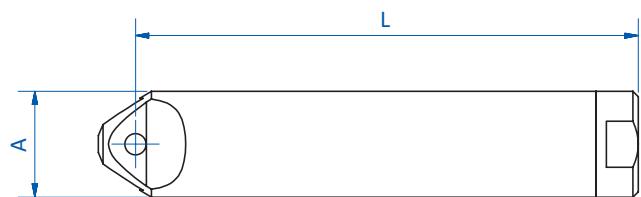
### Product notes

- > Pneumatic shears for robots, cutting stations or manual operation
- > Cutting of paper, film, steel or copper wire, etc.
- > Double-acting, separate control of opening and closing to enable short duty cycles
- > Continuous cutting process as no return spring required
- > Blades are not included in the scope of delivery. Please order separately.

### Technical data

Item no.	Housing	Max. cutting force [N]	Air consumption [cm <sup>3</sup> /stroke]	Operating pressure [bar (psi)]	Pipe connection [mm]	Weight [g]
GT-HWR1	Round	294	45	4 - 5 (58 - 72.5)	4	84

### Dimensions



GT-HWR1

Ⓟ = Compressed air connection

Item no.	A [mm]	B [mm]	C [mm]	D [mm]	E [mm]	F	G [mm]	H [mm]	I [mm]	L [mm]
GT-HWR1	20	--	--	--	--	--	--	--	--	95