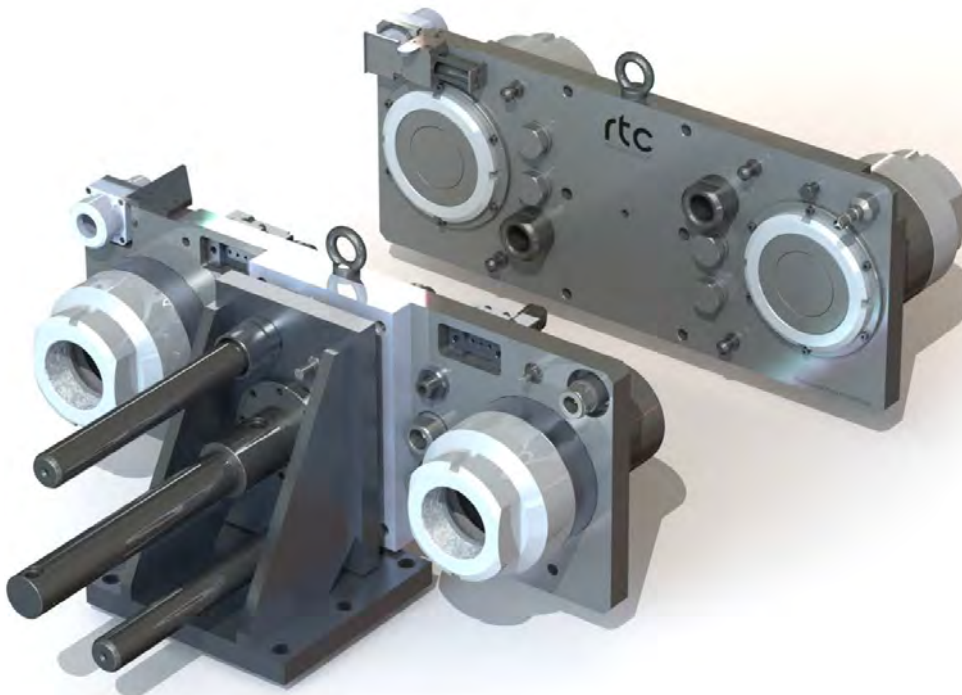


rtc TYPE Customised Multi Coupling System



Customised Multi-Couplings

Customised Multi-Couplings are specially designed according to the customer's needs.

All kinds of connections, such as, **Water**, Pneumatic, **Hydraulic** and **Electrical Connectors** can be mounted on the same plate, in order to minimise the mold changing time without any possible mistake.

Our Research & Development team provides the best solution to the end users, according to the specific inquiries.

