



# rtc<sup>®</sup>

QUICK CONNECT TECHNOLOGY  
[www.rtc-tec.com](http://www.rtc-tec.com)



# 092

rtc TYPE



## rtc type Ejector

### Body size

rtc 092.16

rtc 092.18

rtc 092.19 - Pneumatic Serie

rtc 092.25

rtc 092.36 - Pneumatic Serie

### Material of Standart Ejector Coupler

Coupler Body

Kupplungsgrundkörper : Steel

Sleeve : Steel Hardened

Springs : Steel

Balls : Steel Hardened

Male Part : Steel Hardened

### Material of Pneumatic Ejector Coupler

Coupler Body

Kupplungsgrundkörper : Steel

Sleeve : Steel Hardened

Springs : Steel

Balls : Steel Hardened

Male Part : Steel Hardened

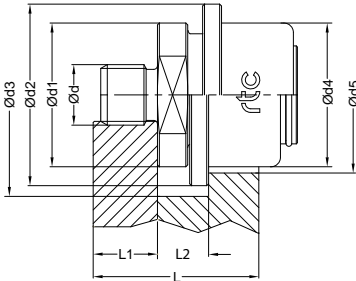
### Advantages

- Quick and easy installation
- Return of the ejector plate is assured
- Part ejection is assured
- Coupling is obtained in any position, disconnecting is made only after the ejector plate is fully returned.
- Fast acting, up to 30 strokes per minute.
- Can be used on all injection machines equipped with hydraulic or mechanical ejection
- Set-up time can be greatly reduced.
- Reduced noise on machines with mechanical knock-outs
- Especially suited for injection machines that do not have easy access to the ejector plate.



**rtc** TYPE 092 Male thread socket / Kupplung mit Aussengewinde

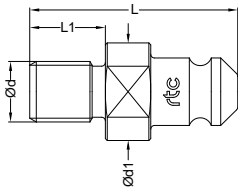
Sockets



Size	Order No	Ød	Ød1	Ød2	Ød3	Ød4	Ød5	L	L1	L2	Pull Force (kg)
16	092.16 SMO 12175	M12x1.75	32	39	43	32	34	42.5	15	10	1500
	092.16 SMO 1615	M16x1.5	32	39	43	32	34	42.5	15	10	1500
	092.16 SZO 16-11	NPS 5/8-11	32	39	43	32	34	42.5	15	10	1500
18	092.18 SMO 1615	M16x1.5	38	48	53	38	40	52	15	13	2400
	092.18 SMO 1620	M16x2.0	38	48	53	38	40	52	15	13	2400
25	092.25 SMO 1615	M16x1.5	52	65	70	56	58	68	18	17	3200
	092.25 SMO 1815	M18x1.5	52	65	70	56	58	68	18	17	3200
	092.25 SMO 2015	M20x1.5	52	65	70	56	58	68	18	17	3200
	092.25 SMO 2415	M24x1.5	52	65	70	56	58	68	18	17	3200
	092.25 SMO 2715	M27x1.5	52	65	70	56	58	68	18	17	3200
092.25 SMO 3015	M30x1.5	52	65	70	56	58	68	18	17	3200	

**rtc** TYPE 092 Male thread plug / Nippel mit Aussengewinde

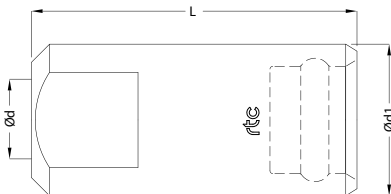
Plugs



Size	Order No	Ød	Ød1	L	L1	Pull Force (kg)
16	092.16 PMO 1015	M10x1.5	22.8	45.5	20	1500
	092.16 PMO 12175	M12x1.75	22.8	45.5	20	1500
	092.16 PMO 1420	M14x2.0	22.8	45.5	20	1500
	092.16 PZO 16-11	NPS 5/8-11	22.8	45.5	20	1500
18	092.18 PMO 1015	M10x1.5	22.8	45.5	20	2400
	092.18 PMO 12175	M12x1.75	22.8	45.5	20	2400
	092.18 PMO 1420	M14x2.0	22.8	45.5	20	2400
	092.18 PMO 1620	M16x2.0	22.8	45.5	20	2400
25	092.25 PMO 1620	M16x2.0	34.3	68	20	3200
	092.25 PMO 1825	M18x2.5	34.3	68	20	3200
	092.25 PMO 2025	M20x2.5	34.3	68	20	3200
	092.25 PMO 2430	M24x3.0	34.3	68	20	3200
	092.25 PMO 2730	M27x3.0	34.3	68	20	3200
	092.25 PMO 3035	M30x3.5	34.3	68	20	3200

**rtc** TYPE 092 Pneumatic Serie Female thread socket / Kupplung mit Innengewinde

Sockets

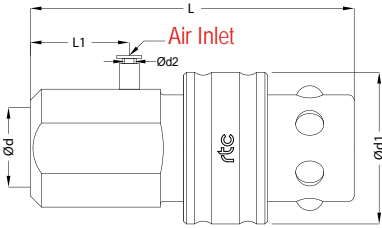


Size	Order No	Ød	Ød1	L	Pull Force (kg)
19	092.19 SFO 12175	M12x1.75	27	58	1500
36	092.36 SFO 2025	M20x2.5	49	97	6000

Female thread socket / Kupplung mit Innengewinde

TYPE 092 Pneumatic Serie

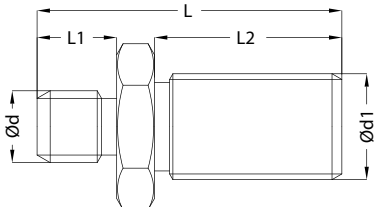


Plugs	Size	Order No	Ød	Ød1	Ød2 Pneu. Hose	L	L1	Pull Force (kg)
	19	092.19 PFO 12175	M12x1.75	27	4	58	18	1500
	36	092.36 PFO 2025	M20x2.5	49	4	97	23	6000

Female thread socket / Kupplung mit Innengewinde

TYPE 092 Pneumatic Serie



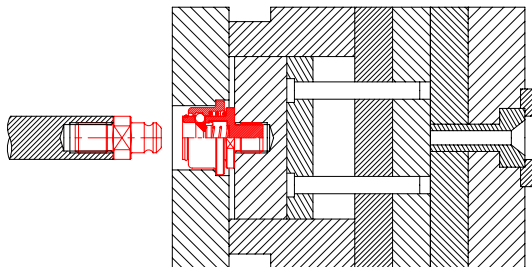
Adapter	Size	Order No	Ød	Ød1	L	L1	L2
	19	092.19 MMN 12-12	M12x1.75	M12x1.75	35	10	20
		092.19 MMN 12-1216	M12x1.75	UNF 3/8-16	35	10	20
		092.19 MMN 12-16	M12x1.75	M16x2.00	35	10	20
	36	092.36 MMN 20-16	M20x2.5	M16x2.00	49	16	25
		092.36 MMN 20-1910	M20x2.5	UNF 3/4-10	49	16	25
		092.36 MMN 20-24	M20x2.5	M24x2.50	49	16	25

Working Principle - Funktionsprinzip

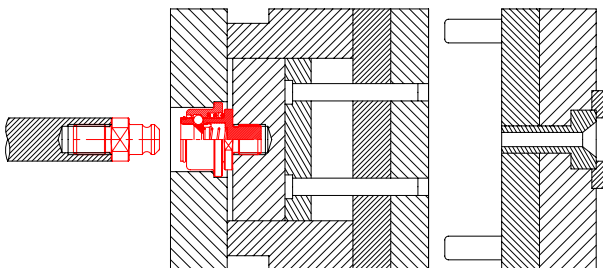
TYPE 092



Stage 1



Stage 2



Stage 3

