



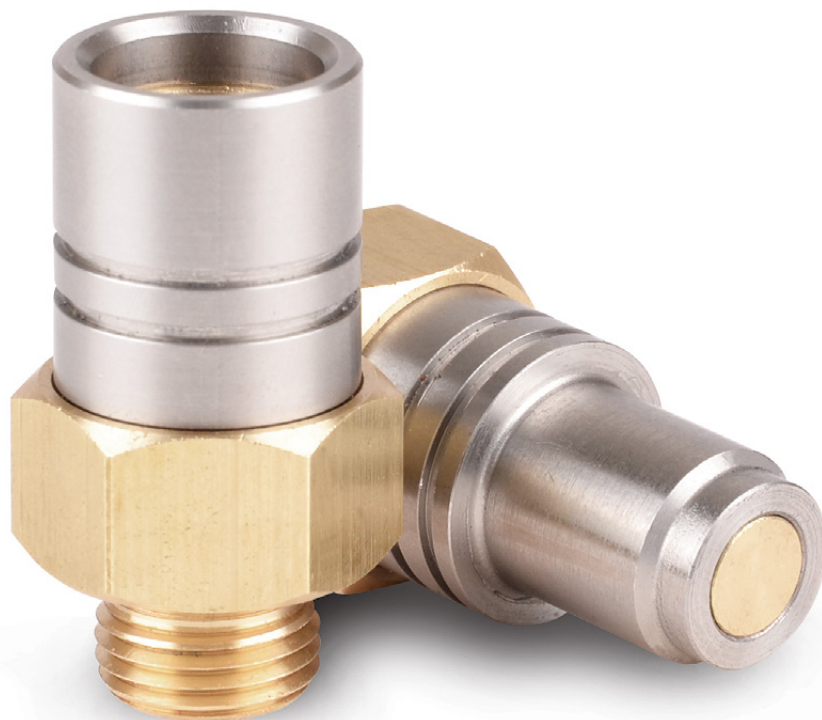
rtc[®]

QUICK CONNECT TECHNOLOGY
www.rtc-tec.com



093

rtc TYPE



Temperature Range

-5°C +180°C (+23°F +356°F) FPM (V)

Working Pressure

rtc 093.08 20 bar (290 PSI)

Flow size - Nennweiten

rtc 093.08 8 mm

Material of Standard Coupler

Socket Front Body	Stainless Steel
Socket Back Body	Brass
Valve	Brass
Springs	Stainless Steel
Seals	FPM (V)
Plug Front Body	Stainless Steel
Plug Back Body	Brass

Options

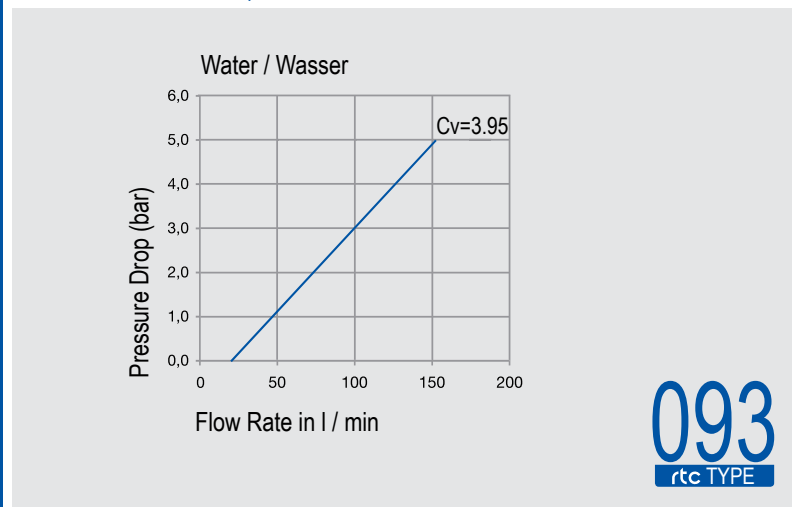
Stainless Steel

Using Area

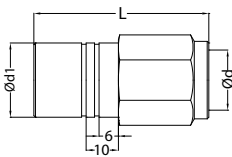
- On temperature regulation applications with hot or cold water, oil etc
- Injection moulding industries
- On steam line



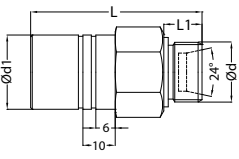
Flow Rate vs Pressure Drop



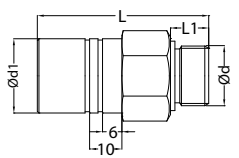
rtc TYPE 093 Female thread socket / Kupplung mit Innengewinde 

Sockets	Size	Order No	Ød	Ød1	L	HEX.
	8.0	093.08 SFB 16	M16x1.5	21.5	48	24
	8.0	093.08 SFB 17	BSP 3/8	21.5	48	24

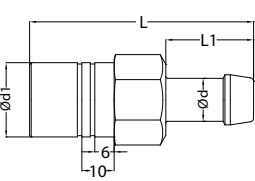
rtc TYPE 093 Male thread socket / Kupplung mit Aussengewinde 

Sockets	Size	Order No	Ød	Ød1	L	L1	HEX
	8.0	093.08 SMB 1615-10	M16x1.5	21.5	37	24	24

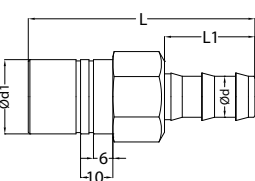
rtc TYPE 093 Male thread socket / Kupplung mit Aussengewinde 

Sockets	Size	Order No	Ød	Ød1	L	L1	HEX
	8.0	093.08 SMB 17	BSP 3/8	21.5	37	24	24

rtc TYPE 093 Standard hose tail socket / Kupplung mit Standard - Schlauchtülle 

Sockets	Size	Order No	Ød	Ød1	L	L1	HEX.
	8.0	093.08 SHB 10	10 mm	21.5	37	24	24
	8.0	093.08 SHB 12	12 mm	21.5	37	24	24

rtc TYPE 093 Push to connect hose socket / Kupplung mit Schnellsteck - Schlauchtülle 

Sockets	Size	Order No	Ød	Ød1	L	L1	HEX.
	8.0	093.08 SPB 10	10 mm	21.5	41	28	24
	8.0	093.08 SPB 13	13 mm	21.5	41	28	24



Female thread plug with valve / Verschlussnippel mit Innengewinde

TYPE 093



Plugs	Size	Order No	Ød	Ød1	L	HEX.
	8.0	093.08 PFB 1615	M16x1.5	22	46.5	24
	8.0	093.08 PFB 17	BSP 3/8	22	46.5	24



Male thread plug with valve / Verschlussnippel mit Aussengewinde

TYPE 093



Plugs	Size	Order No	Ød	Ød1	L	L1	HEX
	8.0	093.08 PMB 1615-10	M16x1.5	22	46.5	33.5	24



Male thread plug with valve / Verschlussnippel mit Aussengewinde

TYPE 093



Plugs	Size	Order No	Ød	Ød1	L	L1	HEX
	8.0	093.08 PMB 17	BSP 3/8	22	46.5	33.5	24



Standard hose tail plug with valve / Verschlussnippel mit Standard - Schlauchtülle

TYPE 093



Plugs	Size	Order No	Ød	Ød1	L	L1	HEX.
	8.0	093.08 PHB 10	10 mm	22	59.5	27.5	24
	8.0	093.08 PHB 12	12 mm	22	63	27.5	24



Push to connect hose tail plug with valve tail / Verschlussnippel mit Schnellsteck - Schlauchtülle

TYPE 093



Plugs	Size	Order No	Ød	Ød1	L	L1	HEX.
	8.0	093.08 PPB 10	10 mm	22	59.5	24	24
	8.0	093.08 PPB 13	13 mm	22	63.5	28	24