



rtc[®]

COUPLING TECHNOLOGY



106

rtc TYPE



Temperature Range

-20°C +100°C (-4°F +212°F) Nitril (N)

Working Pressure

rtc 106.25	10 bar (145 PSI)
rtc 106.33	10 bar (145 PSI)
rtc 106.42	10 bar (145 PSI)
rtc 106.50	10 bar (145 PSI)
rtc 106.63	10 bar (145 PSI)
rtc 106.110	10 bar (145 PSI)

Flow size

rtc 106.25	25 mm
rtc 106.33	33 mm
rtc 106.42	42 mm
rtc 106.50	50 mm
rtc 106.63	63 mm
rtc 106.110	110 mm

Material

Socket Body	Brass chrome plated
Sleeve	Brass chrome plated
Springs	Stainless Steel
Locking Ring	Stainless Steel
Balls	Stainless Steel
Seals	Nitrile
Plug	AISI 420 hardened

Standard version

Brass
NBR (N)

Options

Stainless Steel

Using Area

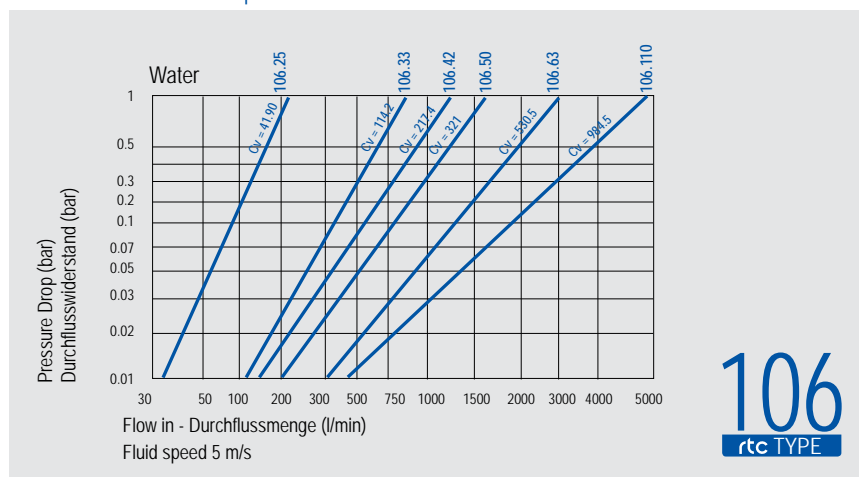
- On temperature regulation applications with hot or cold water, oil etc.
- Injection moulding industries.
- On steam line
- Suction coupling for material conveying (Plastic Granule Carrier Coupling)
- Full flow passage

Material of 106.110

Socket Body-	Aluminium
Sleeve	Aluminium
Plug	Aluminium



Flow Rate vs Pressure Drop



rtc TYPE 106

Cylindrical female thread socket / Kupplung mit Innengewinde zylindrisch



Socket

Size

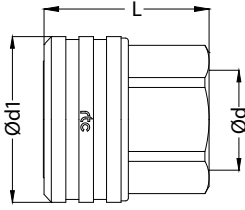
Order No

Ød

Ød1

L

HEX.



25	106.25 SFF 33	BSP 1	54	57	41
33	106.33 SFF 42	BSP 1-1/4	65	62	50
42	106.42 SFF 48	BSP 1-1/2	78	66	60
50	106.50 SFF 60	BSP 2	89	70	70
63	106.63 SFF 75	BSP 2-1/2	109	84	90
110	106.110 SFF 113	BSP 4	180	175	-

rtc TYPE 106

Cylindrical female thread socket with valve/ Verschlusskupplung mit Innengewinde zylindrisch



Socket

Size

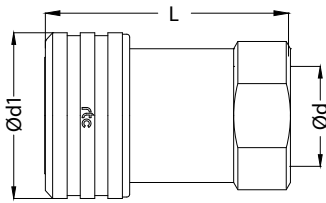
Order No

Ød

Ød1

L

HEX.



Double Shut-off

25	106.25 SFB 33	BSP 1	57	87	41
33	106.33 SFB 42	BSP 1-1/4	65	103	60

rtc TYPE 106

Cylindrical male thread socket / Kupplung mit Ausengewinde zylindrisch



Socket

Size

Order No

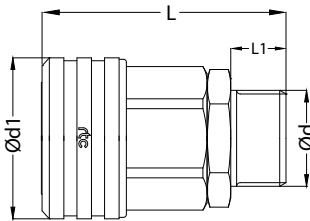
Ød

Ød1

L

L1

HEX.



25	106.25 SMF 33	BSP 1	54	84	19	41
33	106.33 SMF 42	BSP 1-1/4	65	91	19	50
42	106.42 SMF 48	BSP 1-1/2	78	98	20	60
50	106.50 SMF 60	BSP 2	89	110	25	70
63	106.63 SMF 75	BSP 2-1/2	109	131	27	90

rtc TYPE 106

Standard hose tail socket / Kupplung mit gerader Standard - Schlauchtülle



Socket

Size

Order No

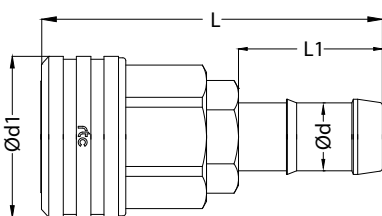
Ød

Ød1

L

L1

HEX.



25	106.25 SHF 25 HT8	25 mm	54	117	50	41
25	106.25 SHF 32 HT8	32 mm	54	117	50	41
33	106.33 SHF 32 HT8	32 mm	65	122	50	50
33	106.33 SHF 38 HT8	38 mm	65	122	50	50
42	106.42 SHF 44 HT8	44 mm	78	126	50	60
50	106.50 SHF 50 HT8	50 mm	89	149	50	70
63	106.63 SHF 63 HT8	63 mm	109	179	75	90

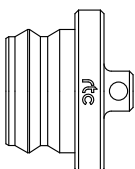
rtc TYPE 106

Dust cup for socket / Staubkappe für Kupplung

Dust cup

Size

Order No



25	106.25 SD 00
33	106.33 SD 00
42	106.42 SD 00
50	106.50 SD 00
63	106.63 SD 00
110	106.110 SD 00



Cylindrical female thread plug / Nippel mit Innengewinde zylindrisch

TYPE 106 **rtc**

Plug	Size	Order No	Ød	Ød1	L	HEX.
	25	106.25 PFF 33	BSP 1	45	61	41
	33	106.33 PFF 42	BSP 1-1/4	55	66	50
	42	106.42 PFF 48	BSP 1-1/2	65	74	60
	50	106.50 PFF 60	BSP 2	75	78	71
	63	106.63 PFF 75	BSP 2-1/2	90	83	84
	110	106.110 PFF 113	BSP 4	150	155	-



Cylindrical female thread plug with valve/ Verschlussnippel mit Innengewinde zylindrisch

TYPE 106 **rtc**

Plug	Size	Order No	Ød	Ød1	L	HEX.
	25	106.25 PFB 33	BSP 1	45	88	41
	33	106.33 PFB 42	BSP 1-1/4	64	105	55

Double Shut-off



Cylindrical male thread plug / Nippel mit Ausengewinde zylindrisch

TYPE 106 **rtc**

Plug	Size	Order No	Ød	Ød1	L	L1	HEX.
	25	106.25 PMF 33	BSP 1	45	88	19	41
	33	106.33 PMF 42	BSP 1-1/4	55	95	19	50
	42	106.42 PMF 48	BSP 1-1/2	65	106	20	60
	50	106.50 PMF 60	BSP 2	75	118	25	71
	63	106.63 PMF 75	BSP 2-1/2	90	130	27	84



Standard hose tail plug / Nippel mit gerader Standard - Schlauchtülle

TYPE 106 **rtc**

Plug	Size	Order No	Ød	Ød1	L	L1	HEX.
	25	106.25 PHF 25 HT8	25 mm	45	122	50	41
	25	106.25 PHF 32 HT8	32 mm	45	122	50	41
	33	106.33 PHF 32 HT8	32 mm	55	127	50	50
	33	106.33 PHF 38 HT8	38 mm	55	127	50	50
	42	106.42 PHF 44 HT8	44 mm	65	131	50	60
	50	106.50 PHF 52 HT8	52 mm	75	149	50	71
	63	106.63 PHF 63 HT8	63 mm	90	178	75	84