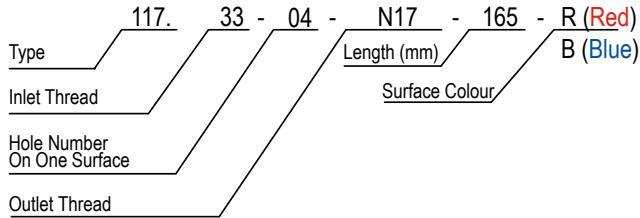


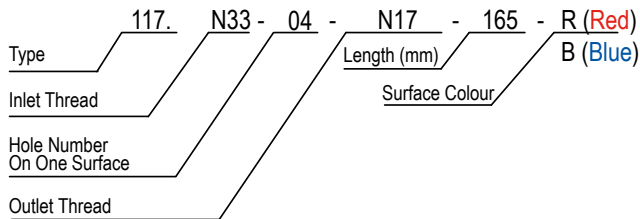
**rtc** 117 BRASS COLLECTORS



**rtc** 117 BSP THREAD (Standart Brass Collectors)

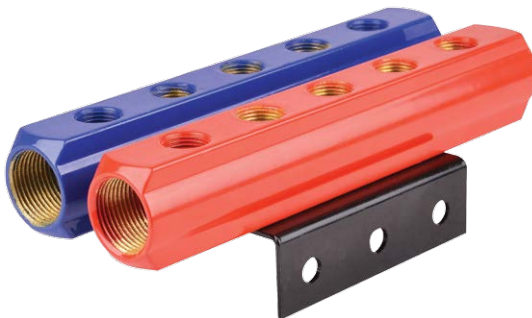


**rtc** 117 NPT THREAD (Brass Collectors)



**Thread Size Explanations**

- BSP=G
- NPT=N
- (1/4" = 13)
- (3/8" = 17)
- (1/2" = 21)
- (3/4" = 26)
- (1" = 33)
- (1-1/4" = 42)
- (1-1/2" = 48)
- (2" = 60)

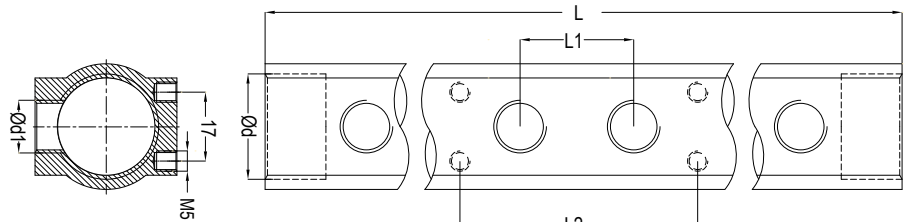


**Collector Carrier**

**Order No:**

117 CC 70 - (For 117.26 & 117.33)

117 CC 90 - (For 117.42)



Ød	Order No / Bestellnr.	Ød1	L	L1	L2				
3/4	117.26-04-13-150	1/4	150	30					
	117.26-05-13-180		180						
	117.26-06-13-210		210						
	117.26-07-13-240		240						
	117.26-08-13-270		270						
	117.26-09-13-300		300						
	117.26-10-13-330		330						
	117.26-11-13-360		360						
	117.26-12-13-390		390						
	3/4		117.26-04-17-165			3/8	165	30	
			117.26-05-17-200				200		
			117.26-06-17-235				235		
			117.26-07-17-270				270		
			117.26-08-17-305				305		
117.26-09-17-340		340							
117.26-10-17-375		375							
117.26-11-17-410		410							
117.26-12-17-445		445							
1		117.33-04-13-165	1/4	165	70				
	117.33-05-13-200	200							
	117.33-06-13-235	235							
	117.33-07-13-270	270							
	117.33-08-13-305	305							
	117.33-09-13-340	340							
	117.33-10-13-375	375							
	117.33-11-13-410	410							
	117.33-12-13-445	445							
	1	117.33-04-17-165		3/8		165		35	
		117.33-05-17-200				200			
		117.33-06-17-235				235			
117.33-07-17-270		270							
117.33-08-17-305		305							
117.33-09-17-340		340							
117.33-10-17-375		375							
117.33-11-17-410		410							
117.33-12-17-445		445							
1		117.33-04-21-210	1/2		210	40			
		117.33-05-21-260			260				
		117.33-06-21-310			310				
	117.33-07-21-360	360							
	117.33-08-21-410	410							
	117.33-09-21-460	460							
	117.33-10-21-510	510							
	117.33-11-21-560	560							
	117.33-12-21-610	610							
	117.33-16-21-810	810							
	117.33-20-21-1010	1010							
	1-1/4	117.42-04-17-196		3/8	196			40	
117.42-05-17-236		236							
117.42-06-17-276		276							
117.42-08-17-356		356							
117.42-10-17-436		436							
117.42-12-17-516		516							
117.42-16-17-676		676							
1-1/4		117.42-04-21-226	1/2		226	50	150		
		117.42-05-21-276			276				
		117.42-06-21-326			326				
		117.42-07-21-376			376				
		117.42-08-21-426			426				
	117.42-10-21-526	526							
117.42-12-21-626	626								