

MF, MFD, MFDS Series

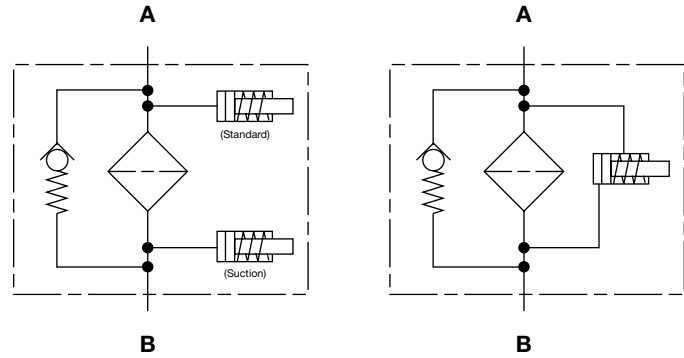
Spin-On Filters
250 PSI • up to 120 GPM



Features

- MF Filters are manufactured with an aluminum head.
- Choice of NPT, SAE straight thread O-ring boss, BSPP, and SAE 4-bolt flange porting to allow easy installation without costly adapters.
- Quick easy element changeouts.
- MF Filters are designed to be used with hydrocarbon based fluids only – (not suitable for use with high water based fluids or phosphate esters)
- MF Filters are available in static and differential pressure sensing configurations.
- Static Indication for Mobile/Return Applications - Sizes 40/80/85/160/180
- Differential Indication for Inline Applications - Sizes 90/95/190/195

Hydraulic Symbol
MF 80/85/160/180 MF 90/95/190/195



Technical Specifications

Mounting Method		
MF40/80/85	2 mounting holes	
MF90/95	3 mounting holes	
MF160/180	2 or 4 mounting holes	
MF190/195	2 or 3 mounting holes	
MFD	2 mounting holes	
MFDS	4 mounting holes	
Port Connection		
MF40	SAE-6	
MF80/85/90/95	3/4" BSPP, 3/4" NPT, SAE-12, 1" NPT, SAE-16	
MF160/180/190/195	1 1/4" BSPP, 1 1/4" NPT, SAE-20, 1 1/2" NPT, SAE-24	
MFD160/180	1 1/2" NPT, SAE-24	
MFDS160/180*	2" SAE Flange Code 61, 1 1/2" NPT Comb. Port	
MFDS190/195*	2" SAE Flange Code 61, 1 1/2" NPT Comb. Port	
*Note: Max. allowable torque for flanged ports is 26 ft-lbs (1/2" - 13 UNC bolts)		
Flow Direction	Inlet: Side	Outlet: Side
Construc. Materials	Head: Aluminum	Can: Steel
Flow Capacity		
40	7 gpm (26 lpm)	
80	15 gpm (57 lpm)	
85	25 gpm (95 lpm)	
90	15 gpm (57 lpm)	
95	25 gpm (95 lpm)	
160,190	30 gpm (114 lpm) per can	
180,195	60 gpm (227 lpm) per can	
Housing Pressure Rating	MF40/80/85/160/180/190/195	MF90/95
Max. Allowable		
Working Pressure**	120 psi (8 bar)	250 psi (17 bar)
Fatigue Pressure	Contact HYDAC	
Burst Pressure	Contact HYDAC	
Element Collapse Pressure Rating		
BN, P, AM	80 psid (5.5 bar)	
Fluid Temp. Range	-14°F to 212°F (-10°C to 100°C)	
Consult HYDAC for applications operating below 14°F (-10°C)		
Fluid Compatibility		
Compatible with all petroleum oils and synthetic fluids rated for use with Nitrile rubber (NBR) seals and aluminum and steel metals		
Indicator Trip Pressure	ΔP Units (Differential)	
20 psid (1.4 bar) -10%	ΔP 14.5 psid (1 bar) - 10%	
25 psid (1.7 bar) -10%	ΔP 22 psid (1.5 bar) - 10%	
40 psid (2.7 bar) (B3.4 Bypass)	ΔP 44 psid (3 bar) - 10%	
Vacuum = 2 psid (0.1 bar) (Suction)		
Bypass Valve Cracking Pressure		
ΔP = 3 psid (0.2 bar) +10% (for suction applications)		
ΔP = 25 psid (1.7 bar) +10% (standard for nominal/surface type filters)		
ΔP = 50 psid (3.4 bar) +10% (standard for absolute/depth filters)		
(standard for absolute/depth type BN filters, MF 80/90/95/160/180/190/195, MFD 160/180, MFDS 160/180)		

**Note: All MF, MFD, MFDS MAWP reduce to 60 psi (4 bar) when using the following "VMF" indicators: B, BM, E, ES, GC, LE, LZ.

Model Code

MF BN 80 A U C 5 A 1 . X / 3 B3.4

Filter Type

- MF = Single Element
- MFD = Dual Filter Heads & Elements (*End to End*) (sizes 160, 180, 190, & 195 only)
- MFDS = Dual Filter Heads & Elements (*Side by Side*) (sizes 160, 180, 190, & 195 only)

Element Media

- BN = Betamicon® (*Low Collapse*) P = Paper **AM = Water Removal**

Size

- 40*, 80*, 85^S, 90*, 95^{tt}, 160, 180, 190 (*uses size 160 element*), 195 (*uses size 180 element*)

Pressure Rating

- A = 120 psi (8.3 bar) (MF40/80/85, MFD160/180, MFDS160/180/190/195)
- C = 250 psi (17.2 bar) (MF90/95)
- Y = 60 psi (4.1 bar) (MF40/80/85, MFD160/180, MFDS160/180, when "E" type static pressure gauge is used)

Element Connection Type

- U = UN thread

Type of Connection

- A = 3/8" Threaded (SAE-6 or 3/8" NPT) (MF40)
- C = 3/4" Threaded (SAE-12, 3/4" NPT, **G 3/4"**) (MF80/85/90/95)
- D = 1" Threaded (SAE-16, **1" NPT**) (MF80/85/90/95)
- E = 1 1/4" Threaded (SAE-20, 1 1/4" NPT, **G 1 1/4"**) (MF160/180/190/195)
- F = **1 1/2" Threaded (SAE-24 MFDS160/180/190/195), 1 1/2" NPT (only for MF160/180)**
- LF = 1 1/2" Threaded and 2" Flanged Combo (1 1/2" NPT and 2" SAE Code 61) MFD160/180, MFD160/180/190/195

Filtration Rating (micron)

- 3, 5, 10, 20 = BN/HC **3, 10 25 = P 10 = AM**

Type of Clogging Indicator

- A, B, C, E, ES, LE (*Static - sizes 80, 85, 160, 180*); (*Differential - sizes 90, 95, 190, 195*)

Type Number

Modification Number (*latest version always supplied*)

Port Configuration

- 0 = G/BSPP Straight Thread Ports (MF80/85/90/95/160/180/190/195)
- 3 = NPT Tapered Thread Ports
- 12 = SAE O-Ring Boss Straight Thread Ports
- 16-3 = Combination NPT Tapered Thread Ports/SAE Code 61 Flanges (MFDS160/180/190/195)

Bypass Valve

- B0.2 = 3 psid/0.2 bar (*For Suction Applications*)
- B1.7 = 25 psid/1.7 bar (*Standard on paper filters sizes 80 - 195 and size 40 BN*)
- KB = No Bypass
- B1.3 = 18 psid/1.3 bar (*size 40 paper only*)
- B3.4 = 50 psid/3.4 bar (*Standard on BN & AM Series (sizes MF 80/90/95/160/180/190/195 & MFD 160/180 only)*)
- IP2 = Alternate Indicator Position 2 (*sizes MF190/195 or MFDS 190/195*)

Replacement Element Model Code

0080 MA 005 BN

Size

- 0040, 0080 - *(*not available with 3 µm BN elements*)
- 0085 - ^S(*available only with 10 µm P elements*)
- 0090 - ^t(*not available in 3 µm or 25 µm P medias*)
- 0095 - ^{tt}(*not available with 20 µm BN or 25 µm P elements*)
- 0160, 0180 - (*available in all medias*)

Filtration Rating (microns)

- 3, 5, 10, 20 = BN **3, 10, 25 = P**
- 10 = AM (*not available with size 0085*)

Element Media

- BN, P, AM

Supplementary Details

- Bypass settings for element 0040 only (*bypass valve is inside element can*)
- B1.3 = 18 PSID Bypass (P)
- B1.7 = 25 PSID Bypass (BN)
- (*Spin-on elements available with NBR seals only*)

Clogging Indicator Model Code

VMF 2 E . X / 3

Indicator Prefix

- VMF = Static (*sizes 80/85/160/180*)
- B = Differential (*sizes 90/95/190/195*)

Trip Pressure

- 1.4 = 20 psid (1.4 bar) standard
 - 1.7 = 25 psid (1.7 bar) (*optional*)
 - 2.7 = 40 psid (2.7 bar) (*optional*)
-] Static
- 1 420 = 13 psid (1 bar)
 - 1.5 420 = 22 psid (1.5 bar)
 - 3 420 = 44 psid (3 bar)
-] Differential

Type of Indicator

- A = No indicator - all available with plugged port
- B MF = Pop-up indicator (*auto reset*) (*ΔP sz. MF 90/95,190/195, MFDS 190/195*)
- C MF = Single terminal electric switch (*ΔP - sz. MF 90/95,190/195, MFDS 190/195*)
- C = 2 terminal electric switch (*Static - sz. MF 80/85, 160/180*)
- E = Visual Pressure Gauge (*Static - sz. MF 80/85, 160/180*)
- ES = Visual Pressure Gauge (*port bottom*) (*Static - sz. MF 80/85, 160/180*)
- LE MF = Electric switch & Pop-up (*ΔP - sz. MF 90/95, 190/195, MFDS190/195*)

Modification Number

Supplementary Details

- Seals
- (*omit*) = Nitrile rubber (NBR) (*standard*)
- 3 = NPT port adapter

(*For additional details and options, see Section G - Clogging Indicators.*)