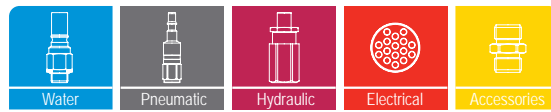




# rtc<sup>®</sup>

QUICK CONNECT TECHNOLOGY  
[www.rtc-tec.com](http://www.rtc-tec.com)



# 106

rtc TYPE





**Temperature Range - Temperaturbereich**  
-20°C +100°C (-40°F +250°F) Nitril (N)

**Working Pressure - Betriebsdruck**

rtc 106.25	0 - 10 bar (0 - 145 PSI)
rtc 106.33	0 - 10 bar (0 - 145 PSI)
rtc 106.50	0 - 10 bar (0 - 145 PSI)
rtc 106.63	0 - 10 bar (0 - 145 PSI)

**Flow size - Nennweiten**

rtc 106.25	25 mm
rtc 106.33	33 mm
rtc 106.50	50 mm
rtc 106.63	63 mm

**Material**

Coupler Body - Kupplungsgrundkörper: Brass chrome plated - Messing verchromt

Sleeve - Hülse: Brass chrome plated - Messing verchromt

Springs - Federn: Stainless Steel - Edelstahl

Locking O-Ring - Sprengling: Stainless Steel - Edelstahl

Balls - Kugeln: Stainless Steel - Edelstahl

Seals - Dichtungen: NBR

Plug - Nippel: AISI 420 hardened - AISI 420 gehärtet

**Standard version - Standardversion**

Brass - Messing  
NBR (N)

**Options - Optionen**

Stainless Steel - Edelstahl

**Working Pressure - Betriebsdruck**

0 - 10 Bar (0 - 145 PSI)

**Using Area**

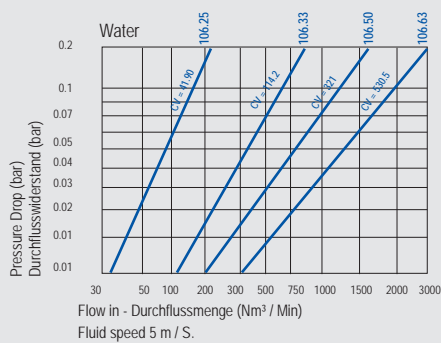
- On temperature regulation applications with hot or cold water, oil etc.
- Injection moulding industries.
- On steam line

**Anwendungsbereiche**

- Werkzeugtemperierung
- Kühlung mit Öl oder Wasser
- Kunststoffindustrie
- Dampfanwendungen



Flow Rate vs Pressure Drop Graph / Durchflussrate vs Druckabfall



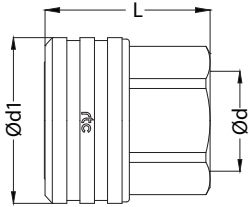
106  
rtc TYPE

rtc TYPE 106

Cylindrical female thread socket / Kupplung mit Innengewinde zylindrisch



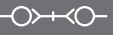
Socket / Kupplung



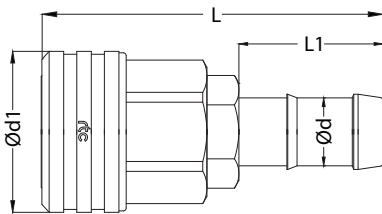
Size Größe	Order No / Bestellnr.	D	D1	L	HEX.
25	106.25 SFF 33	BSP 1"	57	57	46
33	106.33 SFF 42	BSP 1.1/4"	65	62	54
50	106.50 SFF 60	BSP 2"	89	70	77
63	106.63 SFF 75	BSP 2.1/2"	109	84	90

rtc TYPE 106

Standard hose tail socket / Kupplung mit gerader Standard - Schlauchtülle



Socket / Kupplung



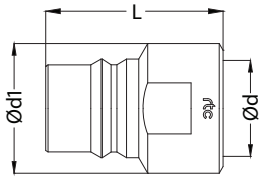
Size Größe	Order No / Bestellnr.	D	D1	L	L1	HEX.
25	106.25 SHF 25 HT8	25	57	117.5	57	46
33	106.33 SHF 32 HT8	32	64	126	62	54
50	106.50 SHF 52 HT8	52	89	134	70	77
63	106.63 SFF 63 HT8	63	109	179	75	90



Cylindrical female thread plug / Nippel mit Innengewinde zylindrisch

TYPE 106 **rtc**

Plug / Nippel



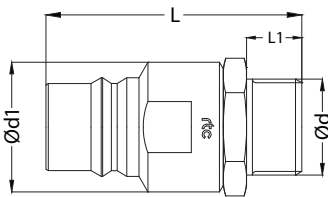
Size Größe	Order No / Bestellnr.	D	D1	L	HEX.
25	106.25 PFF 33	BSP 1	45	61	41
33	106.33 PFF 42	BSP 1-1/4	55	66	50
50	106.50 PFF 60	BSP 2	75	78	71
63	106.63 PFF 75	BSP 2-1/2	90	83	84



Cylindrical male thread plug / Nippel mit Ausengewinde zylindrisch

TYPE 106 **rtc**

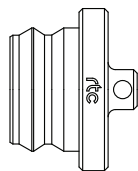
Plug / Nippel



Size Größe	Order No / Bestellnr.	D	D1	L	L1	HEX.
25	106.25 PMF 33	BSP 1	45	88	19	41
33	106.33 PMF 42	BSP 1-1/4	55	97	21	50
50	106.50 PMF 60	BSP 2	75	118	25	71
63	106.63 PMF 75	BSP 2-1/2	90	130	27	84

Dust cup for socket / Staubkappe für Kupplung

TYPE 106 **rtc**



Size Größe	Order No / Bestellnr.
25	106.25 SD 00
33	106.33 SD 00
50	106.50 SD 00
63	106.63 SD 00