



Blades for plastic, straight



Product description

- > Blades with straight cutting edge for clean cuts

Notes

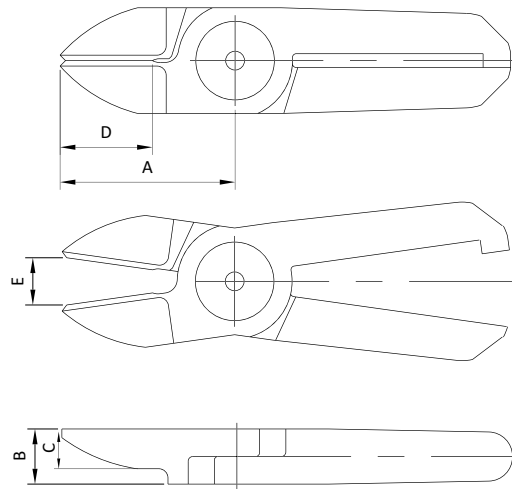
- > AJ, LAB2 and AB39: Standard blade
- > AJL: Blade extra long

Technical data

Item no.	Material	Max. cutting thickness [mm]		Weight [g]	Air nippers
		PP / PE	ABS		
N3AJ	Ferrous alloy	2	--	40	GT-N3 (p.262) GT-NR3 (p.263) GT-NS3 (p.263)
N10LAB2	Ferrous alloy	4	2.6	120	GT-N10 (p.262) GT-NR10L (p.263) GT-NS10L (p.263)
N20AJ	Ferrous alloy	7	5	125	GT-N20 (p.262) GT-NS20 (p.263) GT-NR20 (p.263)
N20AB39	Ferrous alloy	7	5	185	GT-N20 (p.262) GT-NS20 (p.263)
N20AJL	Ferrous alloy	7	5	230	GT-N20 (p.262) GT-NR20 (p.263) GT-NS20 (p.263)
N30AJ	Ferrous alloy	10	6.5	370	GT-N30 (p.262) GT-NR30 (p.263) GT-NS30 (p.263)
N30AJL	Ferrous alloy	10	6.5	470	GT-N30 (p.262) GT-NR30 (p.263) GT-NS30 (p.263)
N50AJL	Ferrous alloy	15	8	1,430	GT-N50 (p.262) GT-NR50 (p.263)



Dimensions



Item no.	A [mm]	B [mm]	C [mm]	D [mm]	E [mm]
N3AJ	24	7	4	12	5.5
N10LAB2	61	12	7	36	10
N20AJ	35	12	8	18	11
N20AB39	61	12	7	36	14
N20AJL	65	12	7	20	16
N30AJ	52	17	8	28	11
N30AJL	75	17	8	25	19
N50AJL	110	25	15	35	26



Blades for plastic, angled



Model PF

Product description

- > Blades with angled cutting edge

Notes

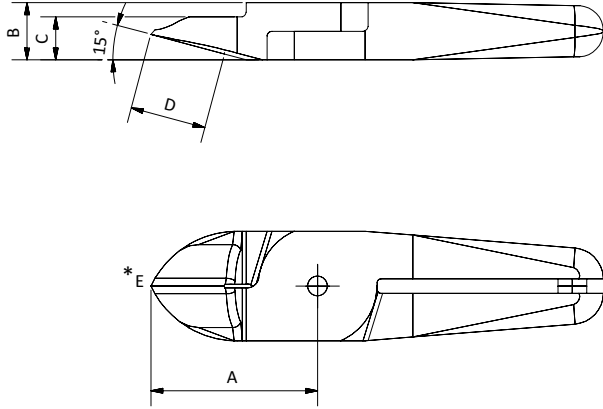
- > PF: Blades with deep angle
- > All other blades with standard angle

Technical data

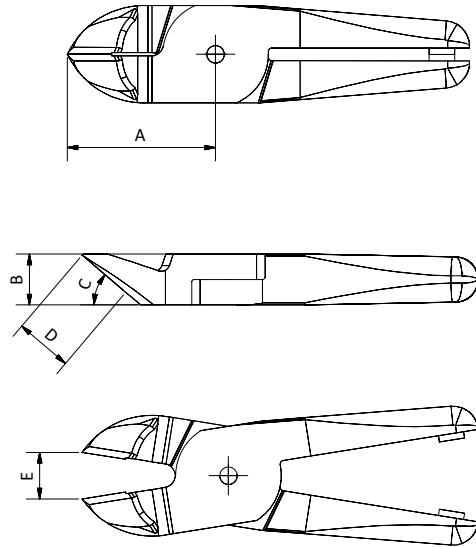
Item no.	Material	Max. cutting thickness [mm]		Weight [g]	Air nippers
		PP / PE	ABS		
N3AP	Ferrous alloy	2	--	35	GT-N3 (p.262), GT-NR3 (p.263), GT-NS3 (p.263)
N5AP	Ferrous alloy	2	--	40	GT-N5 (p.262), GT-NR5 (p.263), GT-NS5 (p.263)
N7AP	Ferrous alloy	3	2	80	GT-N7 (p.262), GT-NR7 (p.263), GT-NS7 (p.263)
N7PF	Ferrous alloy	3	2	80	GT-N7 (p.262), GT-NR7 (p.263), GT-NS7 (p.263)
N10AP	Ferrous alloy	4	2.6	85	GT-N10 (p.262)
N10LAB152	Ferrous alloy	4	2.6	165	GT-N10 (p.262), GT-NR10L (p.263)
N10LAP	Ferrous alloy	4	2.6	120	GT-NR10L (p.263), GT-NS10L (p.263)
N10LPF	Ferrous alloy	4	2.6	120	GT-NR10L (p.263), GT-NS10L (p.263)
N12AP	Ferrous alloy	4.5	4	135	GT-N12 (p.262)
N20AA239	Ferrous alloy	6	4	195	GT-N20 (p.262), GT-NS20 (p.263)
N20AA27	Ferrous alloy	6.5	4.5	145	GT-N20 (p.262), GT-NS20 (p.263)
N20AB360	Ferrous alloy	7	5	185	GT-NS20 (p.263)
N20AP	Ferrous alloy	7	5	125	GT-NS20 (p.263), GT-N20 (p.262), GT-NR20 (p.263)
N20PF	Ferrous alloy	7	5	130	GT-N20 (p.262), GT-NR20 (p.263), GT-NS20 (p.263)
N30AA114	Ferrous alloy	10	6.5	385	GT-N30 (p.262), GT-NR30 (p.263), GT-NS30 (p.263)
N30AP	Ferrous alloy	10	6.5	380	GT-N30 (p.262), GT-NR30 (p.263), GT-NS30 (p.263)
N30PF	Ferrous alloy	10	6.5	390	GT-N30 (p.262), GT-NR30 (p.263), GT-NS30 (p.263)
N50AB	HSS steel	15	8	1,100	GT-N50 (p.262), GT-NR50 (p.263)
N50ABH41	HSS steel	18	8	1,000	GT-N50 (p.262), GT-NR50 (p.263)



Dimensions



N3AP | N5AP | N7AP | N10AP |
N10LAP | N12AP | N20AP | N30AP



N7PF | N10LPF | N20PF | N30PF

* = width of opening

Item no.	A [mm]	B [mm]	C [°]	D [mm]	E [mm]
N3AP	24	7	15	11.5	4
N5AP	24	7	15	11.5	4
N7AP	27	9	30	11.5	4
N7PF	27	9	40	10.5	4
N10AP	27	9	30	11.5	5
N10LAB152	61	12	15	35	10
N10LAP	35	12	15	16	5
N10LPF	35	12	40	13.5	5
N12AP	35	12	15	16	5
N20AA239	52.3	12	40	27	14
N20AA27	45	12	23	25	12
N20AB360	61	12	15	35	16
N20AP	35	12	15	16	11
N20PF	35	12	40	13.5	11
N30AA114	76.3	17	30	50	20
N30AP	66	17	15	38	16
N30PF	58	17	30	25	15
N50AB	90	25	30	29	21
N50ABH41	119.6	25	30	40	29



Blades for plastic, laterally facing



Product description

- > Blades with 90° bend cutting edge for sprues in restricted spaces, e.g. sprues of two opposing parts

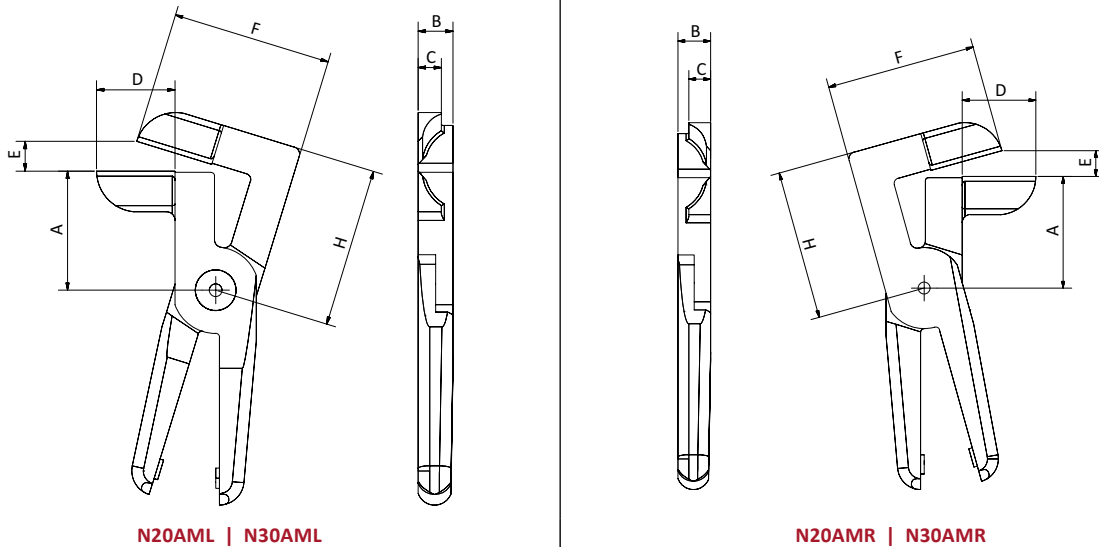
Notes

- > AML: Blade with left orientation
- > AMR: Blade with right orientation

Technical data

Item no.	Material	Max. cutting thickness [mm]		Weight [g]	Air nippers
		PP / PE	ABS		
N20AML	Ferrous alloy	10x1.5	8x1	270	GT-N20 (p.262), GT-NR20 (p.263), GT-NS20 (p.263)
N20AMR	Ferrous alloy	10x1.5	8x1	270	GT-NR20 (p.263), GT-NS20 (p.263), GT-N20 (p.262)
N30AML	Ferrous alloy	15x2	10x1.5	520	GT-N30 (p.262), GT-NR30 (p.263), GT-NS30 (p.263)
N30AMR	Ferrous alloy	15x2	10x1.5	520	GT-N30 (p.262), GT-NR30 (p.263), GT-NS30 (p.263)

Dimensions



N20AML | N30AML

N20AMR | N30AMR

Item no.	A [mm]	B [mm]	C [mm]	D [mm]	E [mm]	F [mm]	H [mm]
N20AML	41	12	8	27	9.5	55	55
N20AMR	41	12	8	27	9.5	55	55
N30AML	39	17	10	36	13	68	55
N30AMR	39	17	10	36	13	68	55



Blades for plastic, L Shape



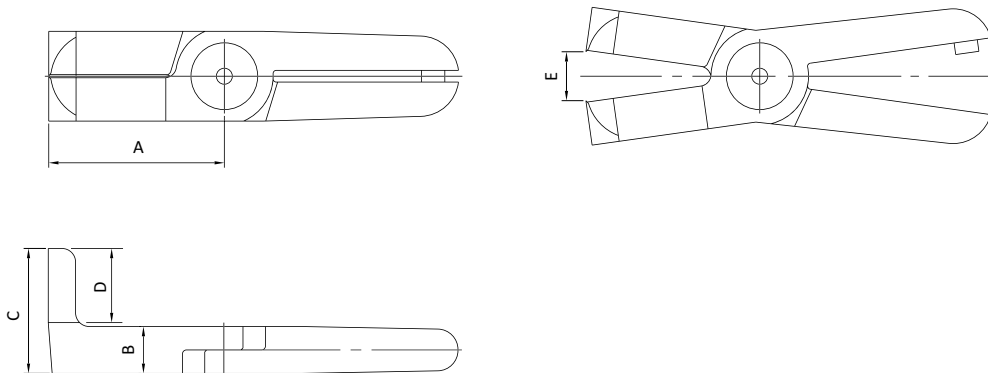
Product description

> Long blades with 90° angle for clean cuts

Technical data

Item no.	Material	Max. cutting thickness [mm]		Weight [g]	Air nippers
		PP / PE	ABS		
N20AL	Ferrous alloy	7	5	135	GT-N20 (p.262) GT-NR20 (p.263) GT-NS20 (p.263)
N30AL525	Ferrous alloy	10	6.5	395	GT-N30 (p.262) GT-NR30 (p.263) GT-NS30 (p.263)

Dimensions



Item no.	A [mm]	B [mm]	C [mm]	D [mm]	E [mm]
N20AL	45	12	32	18	12
N30AL525	60	26	62	36	16



Singular blades for plastic, Z shape



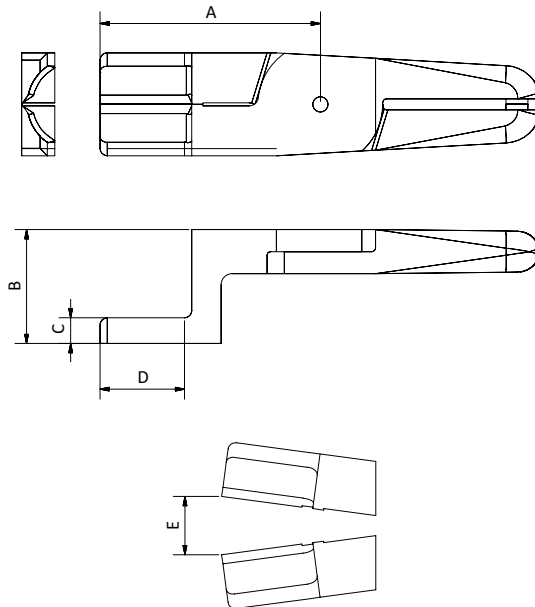
Product description

> Blades with offset cutting edge for overcoming obstacles or for narrow sprues

Technical data

Item no.	Material	Max. cutting thickness [mm]		Weight [g]	Air nippers
		PP / PE	ABS		
N20AH	Ferrous alloy	7	5	240	GT-N20 (p.262) GT-NR20 (p.263) GT-NS20 (p.263)
N30AH	Ferrous alloy	10	6.5	450	GT-N30 (p.262) GT-NR30 (p.263) GT-NS30 (p.263)

Dimensions



Item no.	A [mm]	B [mm]	C [mm]	D [mm]	E [mm]
N20AH	60	31	7	23	16
N30AH	80	65	8	34	22



Blades for plastic, nipper style



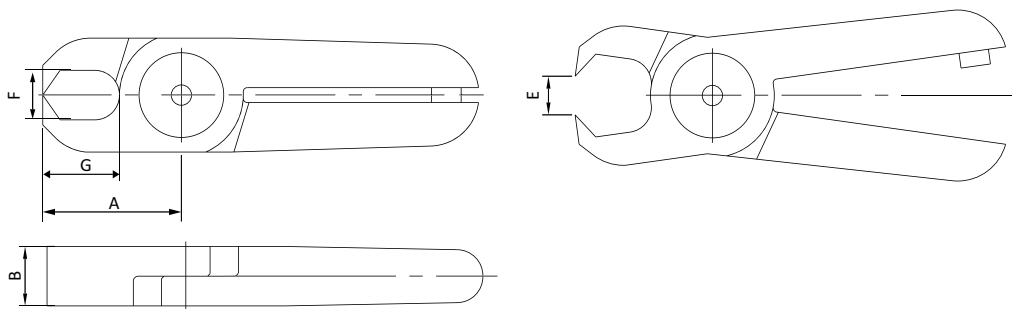
Product description

> Blades, nipper style, for cutting applications

Technical data

Item no.	Material	Max. cutting thickness [mm]		Weight [g]	Air nippers
		PP / PE	ABS		
N3AE	Ferrous alloy	2	--	35	GT-N3 (p.262), GT-NR3 (p.263), GT-NS3 (p.263)
N5AE	Ferrous alloy	2	--	40	GT-N5 (p.262), GT-NR5 (p.263), GT-NS5 (p.263)
N7AE	Ferrous alloy	3	2	85	GT-N7 (p.262), GT-NR7 (p.263), GT-NS7 (p.263)
N10AE	Ferrous alloy	4	2.6	120	GT-N10 (p.262), GT-NR10L (p.263), GT-NS10L (p.263)
N20AE	Ferrous alloy	7	5	135	GT-N20 (p.262), GT-NR20 (p.263), GT-NS20 (p.263)
N30AE	Ferrous alloy	10	6.5	395	GT-N30 (p.262), GT-NR30 (p.263), GT-NS30 (p.263)
N50AE	Ferrous alloy	12	6.5	1,000	GT-N50 (p.262), GT-NR50 (p.263)

Dimensions



Item no.	A [mm]	B [mm]	F x G [mm]	E [mm]
N3AE	20	7	6x11	3.5
N5AE	20	7	6x6.6	3.5
N7AE	26	9	8x14.8	4
N10AE	26	9	8x15.5	10
N20AE	28	12	10x15.5	8
N30AE	45	17	13x28	12
N50AE	128	25	70x10	30