



Corner joint plates 90° to 130°



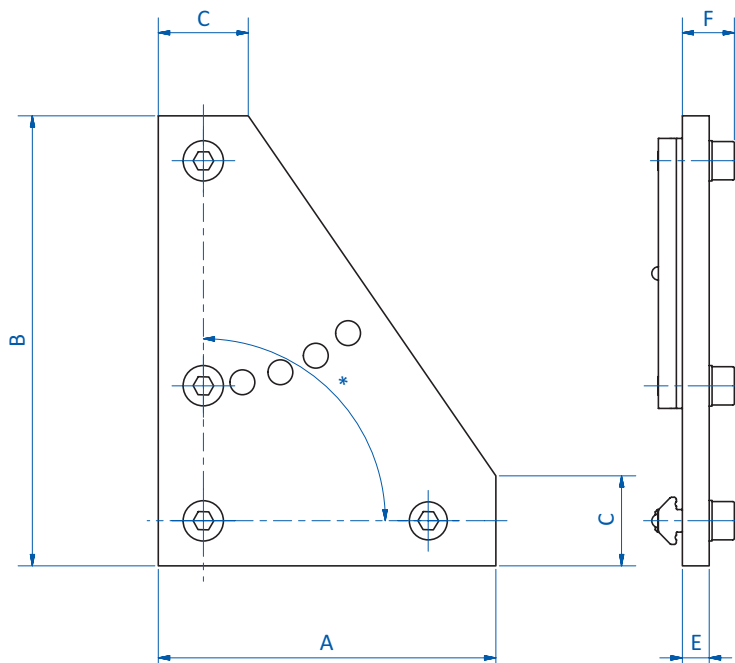
Product notes

> Joining plates for connection of two profiles with a defined angle

Technical data

Item no.	Suitable for extrusion system	Angle [°]	Weight [g]
GR-XL01.063	XLine	90°, 110°, 130°	284

Dimensions



\* = Angle

Item no.	A [mm]	B [mm]	C [mm]	E [mm]	F [mm]
GR-XL01.063	80	120	40	3	11.8