



Profile connectors



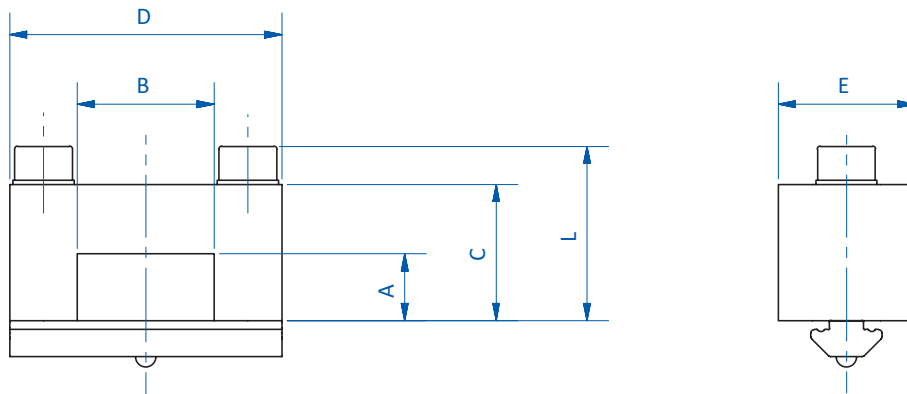
Product notes

- > Elements for 90° connection of two SLine extrusions
- > Extrusions can be moved in four directions after screws are loosened

Technical data

Item no.	Suitable for extrusion system	Weight [g]
GR01.041	SLine	55

Dimensions



Item no.	A [mm]	B [mm]	C [mm]	D [mm]	E [mm]	L [mm]
GR01.041	20	20	29.5	40	20	35