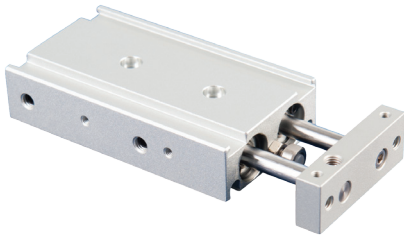


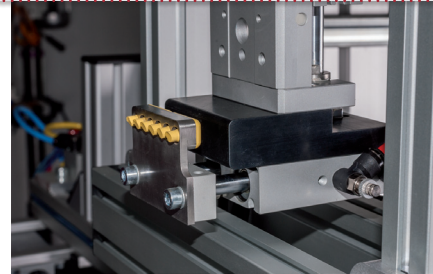
Linear technology | Dual-piston cylinders

Dual-piston cylinders – double-acting

Dual-piston cylinders – double-acting



HIGH PRECISION CYLINDER GUIDING, ANTI-TWIST PROTECTION



Combination of dual-piston cylinder and guide block

Product notes

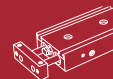
- > Unit to precisely guide gripper components such as vacuum cups to the workpiece
- > Double-acting, separate compressed air connections for extraction and retraction
- > Sensors for optional detection of piston position (extracted/retracted)
- > PNP and NPN sensors:
 - C-slot (90° angle): GR04.202P, GR04.202N
 - C-slot (straight, short design): GR04.280P, GR04.280N
- > Medium: filtered and oiled/unoled air

Technical data

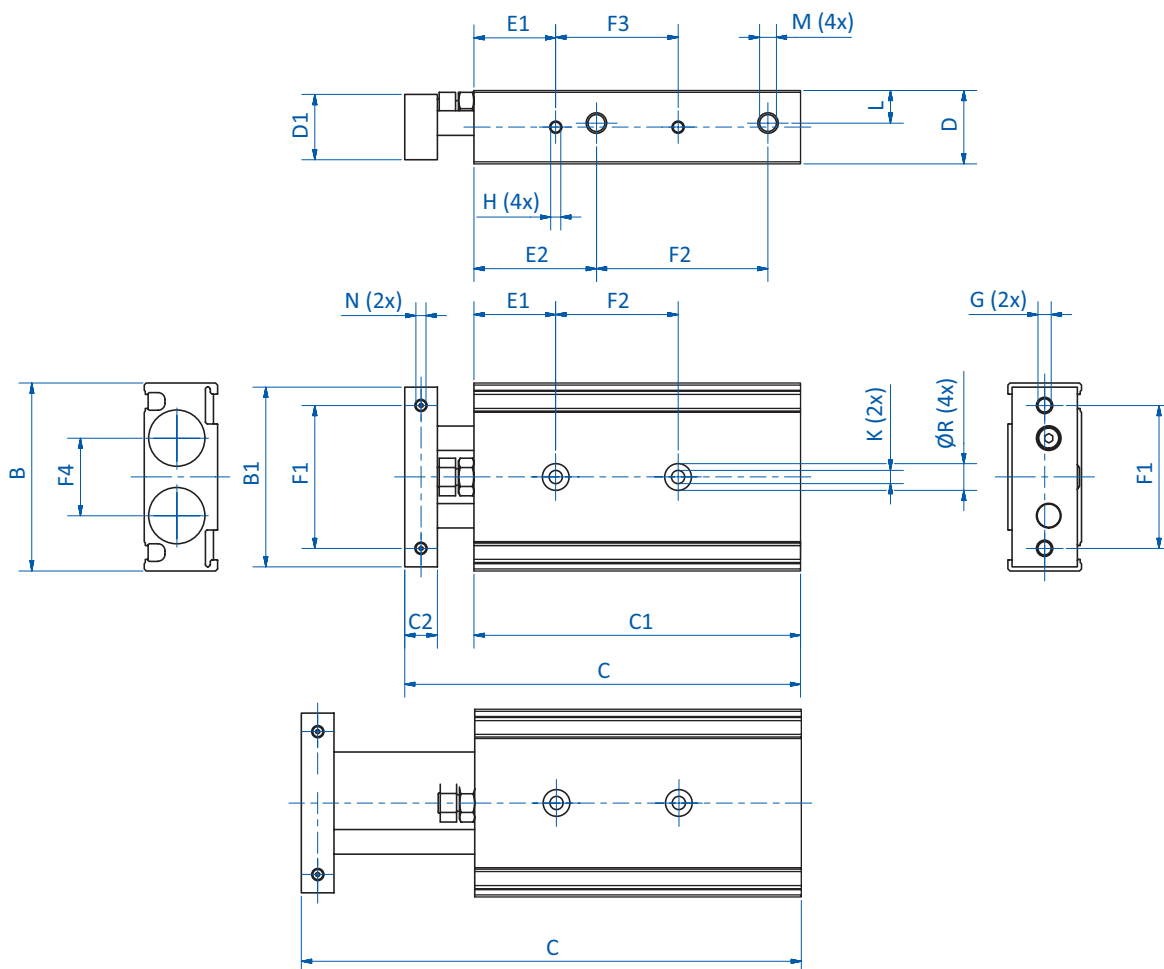
Item no.	GR07.112-25	GR07.112-50	GR07.112-75
Compressed air connection	M5	M5	M5
Operating pressure [bar (psi)]	1 - 7 (14.5 - 101.5)	1 - 7 (14.5 - 101.5)	1 - 7 (14.5 - 101.5)
Piston diameter [mm]	12	12	12
Stroke [mm]	25	50	75
Operating temperature [°C (°F)]	-5 - 70 (23 - 158)	-5 - 70 (23 - 158)	-5 - 70 (23 - 158)
Weight [g]	180	230	280
Suitable sensors	GR04.202N GR04.202P GR04.280N GR04.280P	GR04.202N GR04.202P GR04.280N GR04.280P	GR04.202N GR04.202P GR04.280N GR04.280P

Theoretical cylinder force depending on the working pressure

Working pressure [bar]	Cylinder force [N]	
	GR07.112-xx	
	Move out	Move in
1	16	10
1.5	23.5	15
2	31.5	20
3	47	30
4	63	40
5	78.5	50
6	94	60
7	110	70



Dimensions



① = Compressed air connection M5

Item no.	GR07.112-25	GR07.112-50	GR07.112-75
L [mm]	8.5	8.5	8.5
B [mm]	46	46	46
B1 [mm]	44	44	44
C [mm]	97 - 122	122 - 172	147 - 222
C1 [mm]	80	105	130
C2 [mm]	8	8	8
D [mm]	18	18	18
D1 [mm]	16	16	16
E1 [mm]	20	20	20
E2 [mm]	30	30	30
F1 [mm]	35	35	35
F2 [mm]	42	67	92
F3 [mm]	30	40	50
F4 [mm]	19	19	19
G	M4x0.7	M4x0.7	M4x0.7
H	M3x4,5	M3x4,5	M3x4,5
K	M4	M4	M4
M	M5	M5	M5
N	M3x5	M3x5	M3x5
Ø R	6,5x3,3	6,5x3,3	6,5x3,3