

rtc[®]

COUPLING TECHNOLOGY



101

rtc TYPE



**Temperature Range**

-20°C +100°C (-4°F +212°F) Nitril (N)
 -10°C +180°C (+14°F +356°F) FPM (V)

Max. Working Pressure

rtc 101.06	16 bar (232 PSI)
rtc 101.09	16 bar (232 PSI)
rtc 101.10	16 bar (232 PSI)
rtc 101.12	16 bar (232 PSI)
rtc 101.16	16 bar (232 PSI)
rtc 101.20	16 bar (232 PSI)
rtc 101.25	16 bar (232 PSI)
rtc 101.38	16 bar (232 PSI)

Flow size

rtc 101.06	6 mm
rtc 101.09	9 mm
rtc 101.10	10 mm
rtc 101.12	12 mm
rtc 101.16	16 mm
rtc 101.20	20 mm
rtc 101.25	25 mm
rtc 101.38	38 mm

Material

Socket Body Brass

Sleeve AISI 420 Chromium plated

Valve Brass

Springs Stainless Steel

Seals FPM (V)

Plug 101.06 / 101.09 / 101.10 / 101.12 Brass
 101.16 / 101.20 / 101.25 / 101.38 Stainless Steel

Standard version

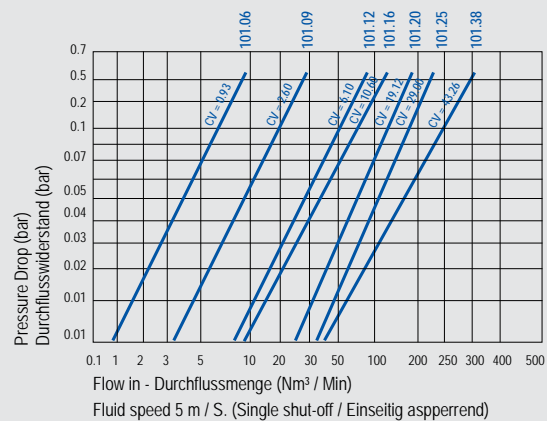
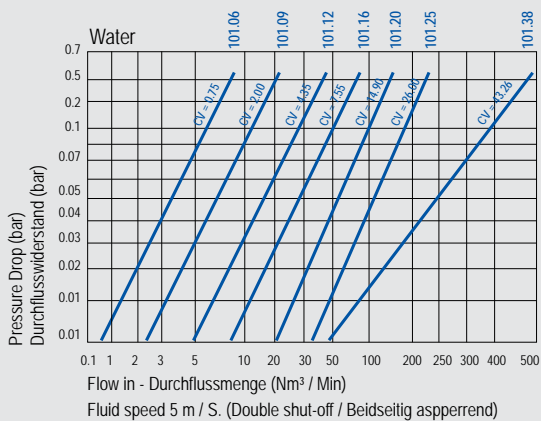
Brass - Messing
 FPM (V)

Options

Stainless Steel
 EPDM Seal
 FFKM Seal
 Colour coding

Using Area

- On temperature regulation applications with hot or cold water, oil etc
- Injection moulding industries
- On steam line

**Flow Rate vs Pressure Drop Graph / Durchflussrate vs Druckabfall**

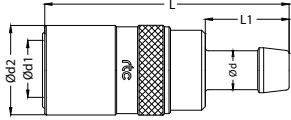
101
 rtc TYPE

rtc TYPE 101

Standard hose tail socket / Kupplung mit Standard Schlauchtülle



Socket / Kupplung



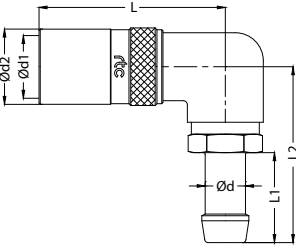
Body size Größe	Order No / Bestellnr. With Valve / Mit Ventil	Order No / Bestellnr. Without Valve / Ohne Ventil	Ød	Ød1	Ød2	L	L1
6	101.06 SHB 06	101.06 SHF 06	6	9.5	19	60	23
6	101.06 SHB 08	101.06 SHF 08	8	9.5	19	60	23
9	101.09 SHB 10	101.09 SHF 10	10	14	24.5	69	27.5
9	101.09 SHB 12	101.09 SHF 12	12	14	24.5	69	27.5
10	101.10 SHB 10	101.10 SHF 10	10	14.5	24.5	69	27.5
10	101.10 SHB 12	101.10 SHF 12	12	14.5	24.5	69	27.5
12	101.12 SHB 12	101.12 SHF 12	12	18	30	81.5	27.5
12	101.12 SHB 16	101.12 SHF 16	16	18	30	81.5	33
16	101.16 SHB 16	101.16 SHF 16	16	22.5	37.5	108	33
16	101.16 SHB 19	101.16 SHF 19	19	22.5	37.5	108	33

rtc TYPE 101

Standard hose tail socket 90° / Kupplung mit Standard Schlauchtülle 90°



Socket / Kupplung



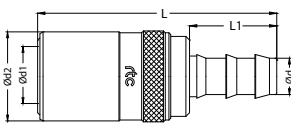
Body size Größe	Order No / Bestellnr. With Valve / Mit Ventil	Order No / Bestellnr. Without Valve / Ohne Ventil	Ød	Ød1	Ød2	L	L1
6	101.06 SHB 08 90	101.06 SHF 08 90	8	9.5	19	60	23
9	101.09 SHB 10 90	101.09 SHF 10 90	10	14	24.5	69	27.5
9	101.09 SHB 12 90	101.09 SHF 12 90	12	14	24.5	69	27.5
10	101.10 SHB 10 90	101.10 SHF 10 90	10	14.5	24.5	69	27.5
10	101.10 SHB 12 90	101.10 SHF 12 90	12	14.5	24.5	69	27.5
12	101.12 SHB 12 90	101.12 SHF 12 90	12	18	30	84	27.5
12	101.12 SHB 16 90	101.12 SHF 16 90	16	18	30	84	33
16	101.16 SHB 19 90	101.16 SHF 19 90	19	22.5	37.5	114	33

rtc TYPE 101

Push to connect hose tail socket / Kupplung mit schnellsteck Schlauchtülle



Socket / Kupplung



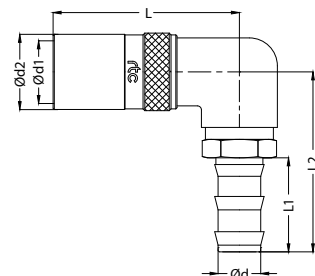
Body size Größe	Order No / Bestellnr. With Valve / Mit Ventil	Order No / Bestellnr. Without Valve / Ohne Ventil	Ød	Ød1	Ød2	L	L1
6	101.06 SPB 10	101.06 SPF 10	10	9.5	19	61	24
9	101.09 SPB 10	101.09 SPF 10	10	14	24.5	66	24
9	101.09 SPB 13	101.09 SPF 13	13	14	24.5	81.5	28
10	101.10 SPB 10	101.10 SPF 10	10	14.5	24.5	66	24
10	101.10 SPB 13	101.10 SPF 13	13	14.5	24.5	81.5	28
12	101.12 SPB 13	101.12 SPF 13	13	18	30	81.5	28
12	101.12 SPB 16	101.12 SPF 16	16	18	30	91.5	38
16	101.16 SPB 19	101.16 SPF 19	19	22.5	37.5	113	38

rtc TYPE 101

Push to connect hose tail socket 90° / Kupplung mit schnellsteck Schlauchtülle 90°



Socket / Kupplung



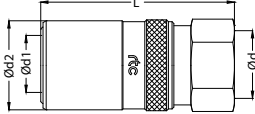
Body size Größe	Order No / Bestellnr. With Valve / Mit Ventil	Order No / Bestellnr. Without Valve / Ohne Ventil	Ød	Ød1	Ød2	L	L1
6	101.06 SPB 10 90	101.06 SPF 08 90	10	9.5	19	60	24
9	101.09 SPB 10 90	101.09 SPF 10 90	10	14	24.5	69	24
9	101.09 SPB 13 90	101.09 SPF 13 90	13	14	24.5	69	28
10	101.10 SPB 10 90	101.10 SPF 10 90	10	14.5	24.5	69	24
10	101.10 SPB 13 90	101.10 SPF 13 90	13	14.5	24.5	69	28
12	101.12 SPB 13 90	101.12 SPF 13 90	13	18	30	84	28
12	101.12 SPB 16 90	101.12 SPF 16 90	16	18	30	84	38
16	101.16 SPB 19 90	101.16 SPF 19 90	19	22.5	37.5	114	38



Female thread socket / Kupplung mit Innengewinde

TYPE 101



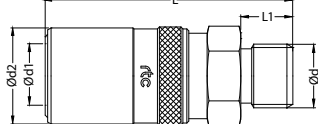
Socket / Kupplung	Body size Größe	Order No / Bestellnr. With Valve / Mit Ventil	Order No / Bestellnr. Without Valve / Ohne Ventil	Ød	Ød1	Ød2	L	HEX.
	6	101.06 SFB 13	101.06 SFF 13	BSP 1/4	9.5	19	46	17
	6	101.06 SNB 13	101.06 SNF 13	NPT 1/4	9.5	19	46	17
	9	101.09 SFB 17	101.09 SFF 17	BSP 3/8	14	24.5	53	22
	9	101.09 SNB 17	101.09 SNF 17	NPT 3/8	14	24.5	53	22
	10	101.10 SFB 17	101.10 SFF 17	BSP 3/8	14	24.5	53	22
	10	101.10 SNB 17	101.10 SNF 17	NPT 3/8	14	24.5	53	22
	12	101.12 SFB 21	101.12 SFF 21	BSP 1/2	18	30	68	27
	12	101.12 SNB 21	101.12 SNF 21	NPT 1/2	18	30	68	27
	16	101.16 SFB 26	101.16 SFF 26	BSP 3/4	22.5	37.5	90	35
	16	-	101.16 SFF 26x55	BSP 3/4	22.5	37.5	55	35
	16	101.16 SNB 26	101.16 SNF 26	NPT 3/4	22.5	37.5	90	35



Cylindrical male thread socket / Kupplung mit zylindrischem Aussengewinde

TYPE 101



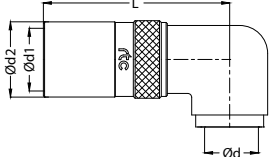
Socket / Kupplung	Body size Größe	Order No / Bestellnr. With Valve / Mit Ventil	Order No / Bestellnr. Without Valve / Ohne Ventil	Ød	Ød1	Ød2	L	L1	HEX.
	6	101.06 SOB 13	101.06 SOF 13	BSP 1/4	9.5	19	46	10	17
	9	101.09 SOB 17	101.09 SOF 17	BSP 3/8	14	24.5	53	11	22
	10	101.10 SOB 17	101.10 SOF 17	BSP 3/8	14.5	24.5	53	11	22
	12	101.12 SOB 21	101.12 SOF 21	BSP 1/2	18	30	67	14	27
	16	101.16 SOB 26	101.16 SOF 26	BSP 3/4	22.5	37.5	90.5	14	35



Female thread socket 90° / Kupplung mit Innengewinde 90°

TYPE 101



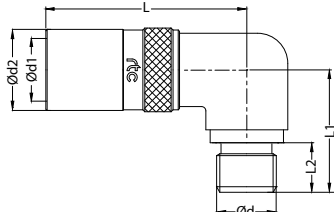
Socket / Kupplung	Body size Größe	Order No / Bestellnr. With Valve / Mit Ventil	Order No / Bestellnr. Without Valve / Ohne Ventil	Ød	Ød1	Ød2	L
	6	101.06 SFB 13 90	101.06 SFF 13 90	BSP 1/4	9.5	19	46
	6	101.06 SNB 13 90	101.06 SNF 13 90	NPT 1/4	9.5	19	46
	9	101.09 SFB 17 90	101.09 SFF 17 90	BSP 3/8	14	24.5	53
	9	101.09 SNB 17 90	101.09 SNF 17 90	NPT 3/8	14	24.5	53
	10	101.10 SFB 17 90	101.10 SFF 17 90	BSP 3/8	14.5	24.5	53
	10	101.10 SNB 17 90	101.10 SNF 17 90	NPT 3/8	14.5	24.5	53
	12	101.12 SFB 21 90	101.12 SFF 21 90	BSP 1/2	18	30	68
	12	101.12 SNB 21 90	101.12 SNF 21 90	NPT 1/2	18	30	68
	16	101.12 SFB 26 90	101.12 SFB 26 90	BSP 3/4	22.5	38	114
	16	101.16 SNB 26 90	101.16 SNF 26 90	NPT 3/4	22.5	38	114



Male thread socket 90° / Kupplung mit Aussengewinde 90°

TYPE 101



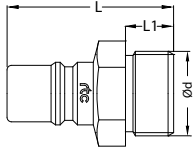
Socket / Kupplung	Body size Größe	Order No / Bestellnr. With Valve / Mit Ventil	Order No / Bestellnr. Without Valve / Ohne Ventil	Ød	Ød1	Ød2	L	L1	L2
	6	101.06 SOB 13 90	101.06 SOF 13 90	BSP 1/4	9.5	19	46	34	9
	9	101.09 SOB 17 90	101.09 SOF 17 90	BSP 3/8	14	24.5	53	40	10
	10	101.10 SOB 17 90	101.10 SOF 17 90	BSP 3/8	14.5	24.5	53	40	10
	12	101.12 SOB 21 90	101.12 SOF 21 90	BSP 1/2	18	30	67	47	12
	16	101.16 SOB 26 90	101.16 SOF 26 90	BSP 3/4	22.5	37.5	114	53	19

rtc TYPE 101

Cylindrical male thread plug / Nippel mit zylindrischem Aussengewinde



Plugs / Nippel



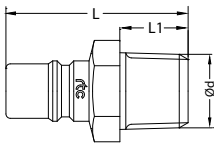
Body size Größe	Order No / Bestellnr. Without Valve / Ohne Ventil	Ød	L	L1	HEX.
6	101.06 PMF 17	BSP 3/8	35.5	10	19
9	101.09 PMF 21	BSP 1/2	37	12	22
10	101.10 PMF 21	BSP 1/2	37	12	22
12	101.12 PMF 26	BSP 3/4	46	16	27
16	101.16 PMF 33	BSP 1	60	22	32
16	101.16 PMF 2415	M24x1.5	60	22	27

rtc TYPE 101

Conical male thread plug / Nippel mit konischem Aussengewinde



Plugs / Nippel



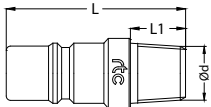
Body size Größe	Order No / Bestellnr. Without Valve / Ohne Ventil	Ød	L	L1	HEX.
12	101.12 PTF 17	NPT 3/8	41	13	24
12	101.12 PRF 21	BSPT 1/2	44	16	22
12	101.12 PTF 21	NPT 1/2	44	16	22
16	101.16 PRF 26	BSPT 3/4	63	16.5	27

rtc TYPE 101

Conical male thread plug inner hex / Nippel mit konischem Aussengewinde und Innensechskant



Plugs / Nippel



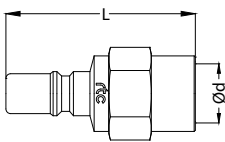
Body size Größe	Order No / Bestellnr. Without Valve / Ohne Ventil	Ød	L	L1	INNER HEX.
6	101.06 PRF 10	BSPT 1/8	31	7.5	5
6	101.06 PRF 13	BSPT 1/4	35	13	5
6	101.06 PTF 10	NPT 1/8	31	10	5
6	101.06 PTF 13	NPT 1/4	35	13	5
9	101.09 PRF 13	BSPT 1/4	34	10	8
9	101.09 PRF 17	BSPT 3/8	36	11	8
9	101.09 PTF 13	NPT 1/4	34	11	8
9	101.09 PTF 17	NPT 3/8	36	11	8
10	101.10 PRF 17	BSPT 3/8	36	11	8
10	101.10 PTF 17	NPT 3/8	36	11	8
12	101.12 PRF 17	BSPT 3/8	39	13	10

rtc TYPE 101

Female thread plug / Nippel mit Innengewinde



Plugs / Nippel



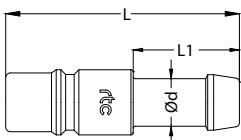
Body size Größe	Order No / Bestellnr. Without Valve / Ohne Ventil	Ød	L	HEX.
6	101.06 PFF 13	BSP 1/4	34	17
6	101.06 PNF 13	NPT 1/4	47	17
9	101.09 PFF 13	BSP 1/4	37	22
9	101.09 PNF 13	NPT 1/4	49	22
9	101.09 PFF 17	BSP 3/8	47	22
9	101.09 PNF 17	NPT 3/8	49	22
10	101.10 PFF 17	BSP 3/8	47	22
10	101.10 PNF 17	NPT 3/8	49	22
12	101.12 PFF 21	BSP 1/2	45	27
12	101.12 PNF 21	NPT 1/2	67	27
16	101.16 PFF 26	BSP 3/4	58	32
16	101.16 PNF 26	NPT 3/4	80	32

rtc TYPE 101

Standard hose tail plug / Nippel mit gerader Standard - Schlauchtülle



Plugs / Nippel



Body size Größe	Order No / Bestellnr. Without Valve / Ohne Ventil	Ød	L	L1
6	101.06 PHF 08	8	44	23
9	101.09 PHF 12	12	50	27.5
10	101.10 PHF 12	12	50	27.5
12	101.12 PHF 16	16	62	33
16	101.16 PHF 19	19	70	33



Cylindrical male thread shut-off plug with sealing O-Ring / Verschlussnippel mit zylindrischem Aussengewinde und O-Ring

TYPE 101



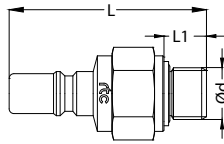
Plugs / Nippel

Body size
GrößeOrder No / Bestellnr.
Without Valve / Ohne Ventil $\varnothing d$

L

L1

HEX.



6	101.06 POB 10	BSP 1/8	45	7	17
6	101.06 POB 13	BSP 1/4	45	9	17
9	101.09 POB 13	BSP 1/4	51	9	19
9	101.09 POB 17	BSP 3/8	48	10	20
10	101.10 POB 17	BSP 3/8	48	10	20
12	101.12 POB 17	BSP 3/8	63.5	10	24
12	101.12 POB 21	BSP 1/2	62	12	24
16	101.16 POB 26	BSP 3/4	81	14	32



Conical male thread plug with valve / Verschlussnippel mit konischem Aussengewinde

TYPE 101



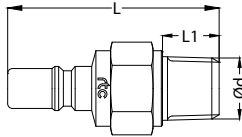
Plugs / Nippel

Body size
GrößeOrder No / Bestellnr.
With Valve / Mit Ventil $\varnothing d$

L

L1

HEX.



6	101.06 PTB 10	NPT 1/8	45	10	17
6	101.06 PTB 13	NPT 1/4	45	11	17
9	101.09 PTB 13	NPT 1/4	52	13	19
9	101.09 PTB 17	NPT 3/8	48.5	13	19
10	101.10 PTB 17	NPT 3/8	48.5	13	19
12	101.12 PTB 17	NPT 3/8	62	13	24
12	101.12 PTB 21	NPT 1/2	62	15	24
16	101.16 PTB 26	NPT 3/4	81	19	32



Male thread plug with valve / Verschlussnippel mit Innengewinde

TYPE 101



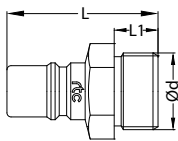
Plugs / Nippel

Body size
GrößeOrder No / Bestellnr.
With Valve / Mit Ventil $\varnothing d$

L

L1

HEX.



6	101.06 PMB 17	BSP 3/8	35.5	10	19
9	101.09 PMB 21	BSP 1/2	37	12	22
10	101.10 PMB 21	BSP 1/2	37	12	22
12	101.12 PMB 26	BSP 3/4	46	16	27
16	101.16 PMB 33	BSP 1	62	24	32



Female thread plug with valve / Verschlussnippel mit Innengewinde

TYPE 101

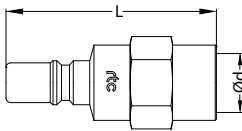


Plugs / Nippel

Body size
GrößeOrder No / Bestellnr.
With Valve / Mit Ventil $\varnothing d$

L

HEX.



6	101.06 PFB 13	BSP 1/4	47	17
6	101.06 PNB 13	NPT 1/4	47	17
9	101.09 PFB 13	BSP 1/4	48.5	22
9	101.09 PNB 13	NPT 1/4	48.5	22
9	101.09 PFB 17	BSP 3/8	49	22
9	101.09 PNB 17	NPT 3/8	49	22
10	101.10 PFB 17	BSP 3/8	49	22
10	101.10 PNB 17	NPT 3/8	49	22
12	101.12 PFB 21	BSP 1/2	63	27
12	101.12 PNB 21	NPT 1/2	65	27
16	101.16 PFB 26	BSP 3/4	81	32
16	101.16 PNB 26	NPT 3/4	81	32



Push to connect hose tail plug / Nippel mit gerader Schnellsteck - Schlauchtülle

TYPE 101

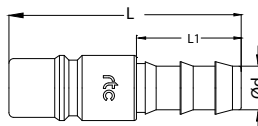


Plugs / Nippel

Body size
GrößeOrder No / Bestellnr.
Without Valve / Ohne Ventil $\varnothing d$

L

L1



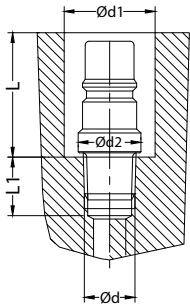
6	101.06 PPF 10	10	45	24
9	101.09 PPF 10	10	46.5	24
9	101.09 PPF 13	13	50.5	28
10	101.10 PPF 10	10	46.5	24
10	101.10 PPF 13	13	50.5	28
12	101.12 PPF 16	16	67	38
16	101.16 PPF 19	19	75	38

rtc TYPE 101

Installation of conical male thread plug / Nippel mit konischem Aussengewinde für den versenkten Einbau



Plugs / Nippel



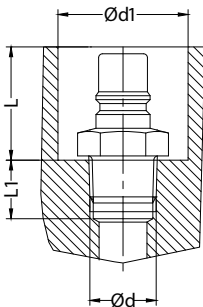
Body size Größe	Order No / Bestellnr. Without Valve / Ohne Ventil	Ød	Ød1	Ød2	L	L1	INNER HEX.
6	101.06 PRF 10	BSPT 1/8	20	10	26	9	5
6	101.06 PTF 10	NPT 1/8	20	11	28	9	5
6	101.06 PRF 13	BSPT 1/4	20	14	27	12	5
6	101.06 PTF 13	NPT 1/4	20	14	27	13	5
9	101.09 PRF 13	BSPT 1/4	26	14	26	12	8
9	101.09 PTF 13	NPT 1/4	26	14	26	13	8
9	101.09 PRF 17	BSPT 3/8	26	17	28	13	8
9	101.09 PTF 17	NPT 3/8	26	17	28	13	8
10	101.10 PRF 17	BSPT 3/8	26	17	28	13	8
10	101.10 PTF 17	NPT 3/8	26	17	28	13	8
12	101.12 PRF 17	BSPT 3/8	33	18	31	13	10

rtc TYPE 101

Installation of conical male thread plug / Nippel mit konischem Aussengewinde für den versenkten Einbau



Plugs / Nippel



Body size Größe	Order No / Bestellnr. Without Valve / Ohne Ventil	Ød	Ød1	L	L1	HEX.
12	101.12 PTF 17	NPT 3/8	36	29	11	24
12	101.12 PRF 21	BSPT 1/2	33	29	15	22
12	101.12 PTF 21	NPT 1/2	33	29	15	22
16	101.16 PRF 26	BSPT 3/4	40	47	19	27

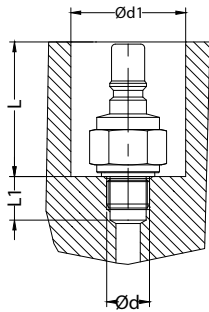


Installation of male thread plug with valve / Verschlussnippel mit Aussengewinde für den versenkten Einbau

TYPE 101



Plugs / Nippel



Body size Größe	Order No / Bestellnr. With Valve / Mit Ventil	Ød	Ød1	L	L1	HEX.
6	101.06 POB 10	BSP 1/8	26	33	9	17
6	101.06 POB 13	BSP 1/4	26	33	12	17
9	101.09 POB 13	BSP 1/4	29	38.5	12	19
9	101.09 POB 17	BSP 3/8	30	38.5	13	20
10	101.10 POB 17	BSP 3/8	30	38.5	13	20
12	101.12 POB 17	BSP 3/8	36	46.5	13	24
12	101.12 POB 21	BSP 1/2	36	46.5	15	24
16	101.16 POB 26	BSP 3/4	46	67	16	32

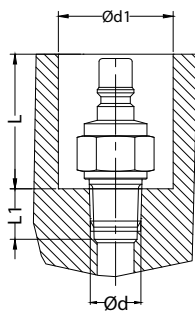


Installation of con. male thread plug with valve / Verschlussnippel mit kon. Aussengewinde für den versenkten Einbau

TYPE 101



Plugs / & Nippel



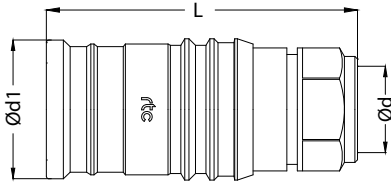
Body size Größe	Order No / Bestellnr. With Valve / Mit Ventil	Ød	Ød1	L	L1	HEX.
6	101.06 PTB 10	NPT 1/8	26	33	9	17
6	101.06 PTB 13	NPT 1/4	26	33	12	17
9	101.09 PTB 13	NPT 1/4	29	38.5	12	19
9	101.09 PTB 17	NPT 3/8	30	38.5	13	20
10	101.10 PTB 17	NPT 3/8	30	38.5	13	20
12	101.12 PTB 17	NPT 3/8	36	46.5	13	24
12	101.12 PTB 21	NPT 1/2	36	46.5	15	24
16	101.16 PTB 26	NPT 3/4	46	67	16	32

rtc TYPE 101

Cylindrical female thread socket / Kupplung mit Innengewinde zylindrisch



Socket / Kuplungen



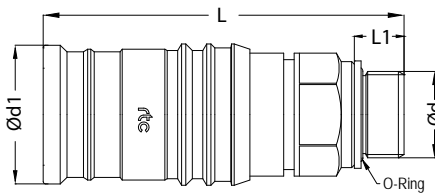
Body size Größe	Order No / Bestellnr. With Valve / Mit Ventil	Ød	Ød1	L	HEX.
20	101.20 SFB 26	BSP 3/4	53	119	42
20	101.20 SFB 33	BSP 1	54	119	42
20	101.20 SNB 33	NPT 1	53	119	42
25	101.25 SFB 33	BSP 1	59.5	141	50
25	101.25 SFB 42	BSP 1-1/4	59.5	141	50
25	101.25 SNB 42	NPT 1-1/4	59.5	141	50
38	101.38 SFB 60	BSP 2	80	150	70
38	101.38 SNB 60	NPT 2	80	150	70

rtc TYPE 101

Cylindrical male thread socket with o-ring / Kupplung mit Aussengewinde zylindrisch mit o-ring



Socket / Kuplungen



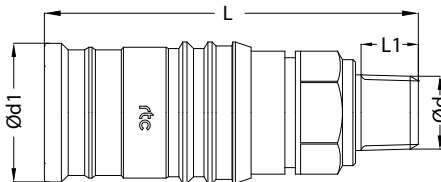
Body size Größe	Order No / Bestellnr. With Valve / Mit Ventil	Ød	Ød1	L	L1	HEX.
20	101.20 SOB 33	BSP 1	54	133	19	42
25	101.25 SOB 33	BSP 1	59.5	142	19	50
25	101.25 SOB 42	BSP 1-1/4	59.5	142	19	50
38	101.38 SOB 48	BSP 1-1/2	80	167	19	70
38	101.38 SOB 60	BSP 2	80	171	25	70

rtc TYPE 101

Conical male thread socket / Kupplung mit Aussengewinde konisch



Socket / Kuplungen



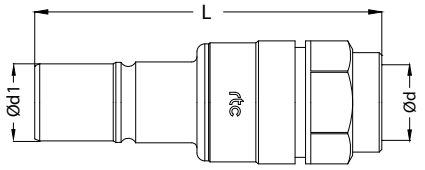
Body size Größe	Order No / Bestellnr. With Valve / Mit Ventil	Ød	Ød1	L	L1	HEX.
20	101.20 STB 33	NPT 1	54	136	22	42
25	101.25 STB 42	NPT 1-1/4	59.5	145	24.5	50
38	101.38 STB 48	NPT 1-1/2	80	172	24.5	70
38	101.38 STB 60	NPT 2	80	174	25.5	70



Cylindrical female thread plug with valve / Verschlussnippel mit Innengewinde zylindrisch

TYPE 101



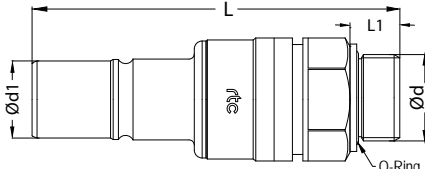
Plugs / Nippel	Body size Größe	Order No / Bestellnr. With Valve / Mit Ventil	Ød	Ød1	L	HEX.
	20	101.20 PFB 26	BSP 3/4	29.5	126.5	42
	20	101.20 PFB 33	BSP 1	29.5	126.5	42
	20	101.20 PNB 33	NPT 1	29.5	126.5	42
	25	101.25 PFB 33	BSP 1	34.5	148.5	50
	25	101.25 PFB 42	BSP 1-1/4	34.5	148.5	50
	25	101.25 PNB 42	NPT 1-1/4	34.5	148.5	50
	38	101.38 PFB 48	BSP 1-1/2	46.5	156	70
	38	101.38 PFB 60	BSP 2	46.5	156	70



Cylindrical male thread plug with valve / Verschlussnippel mit Aussengewinde zylindrisch

TYPE 101



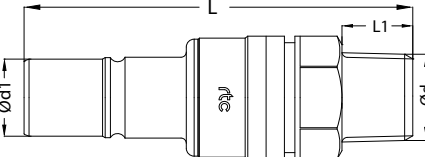
Plugs / Nippel	Body size Größe	Order No / Bestellnr. With Valve / Mit Ventil	Ød	Ød1	L	L1	HEX.
	20	101.20 POB 33	BSP 1	29.5	141	19	42
	25	101.25 POB 48	BSP 1-1/2	34.5	151	19	50



Conical male thread plug with valve / Verschlussnippel mit Aussengewinde konisch

TYPE 101



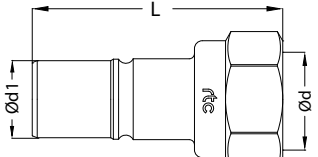
Plugs / Nippel	Body size Größe	Order No / Bestellnr. With Valve / Mit Ventil	Ød	Ød1	L	L1	HEX.
	20	101.20 PTB 33	NPT 1	29.5	146	24	42
	25	101.25 PTB 48	NPT 1-1/2	34.5	156	24	50



Cylindrical female thread plug / Nippel mit Innengewinde zylindrisch

TYPE 101



Plugs / Nippel	Body size Größe	Order No / Bestellnr. Without Valve / Ohne Ventil	Ød	Ød1	L	HEX.
	20	101.20 PFF 33	BSP 1	29.5	92	42
	25	101.25 PFF 48	BSP 1-1/2	34.5	100	55