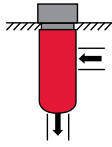


CF Series

Manifold Cartridge Filters
3000 psi • up to 25 gpm

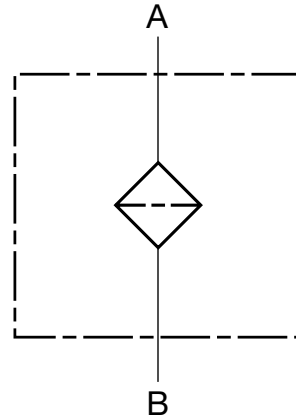


CFxx20



CFxx45

Hydraulic Symbol



Features

- Made of aluminum for light weight and low cost.
- Made to dispose of when fully clogged.
- Low price - market competitive.

Technical Specifications

Port Connections	CF20	SAE-16 Modified Cavity
	CF45	SAE-20 Cavity (VC20-S3)
Direction of Flow	Outside to Inside flow	
Materials of Construction	Aluminum	
Flow Capacity		
CF20	5 GPM (15 micron - fiberglass media) 2.5 GPM recommended design flow max. - for high efficiency media	
CF45	12 GPM (25, 149 micron - wire screen media) 12 GPM (15 micron - fiberglass media) 6 GPM recommended design flow max. - for high efficiency media 25 GPM (25, 149 micron - wire screen media)	
Housing Pressure Rating		
Max. Allowable Working Pressure:	3000 psi (207 bar)	
Proof Pressure:	4500 psi (310 bar)	
Element Performance Rating		
MM, W	290 psid (20 bar)	
Fluid Temperature Range		
	-22°F to 250°F (-30°C to 121°C) Consult HYDAC for applications operating below -22°F (-30°C)	
Fluid Compatibility		
Compatible with all hydrocarbon based, synthetic, water glycol, oil/water emulsion, and high water based fluids when the appropriate seals are selected.		

HIGH PRESSURE FILTERS

Model Code

CF W 20 G 25 W 1 . 0 / 12

Filter Type

CF = Manifold Cartridge Filter

Element Media

MM = Mobilemicron® W = Wire Mesh

Size

20, 45

Type of Connection

G = Threaded

Filtration Rating (micron)

25, 149 = W 15 = MM

Type of Indicator

W = No Indicator Available

Type Number

1 = Standard Configuration

Modification Number (latest version always supplied)

Port Configuration

12 = SAE-16 Modified Cavity (CF 20)

12 = SAE-20 Cavity (VC20-S3) (CF 45)

Seals

(omit) = Nitrile rubber (NBR) (standard)

V = Fluorocarbon elastomer (FKM)

Model Codes Containing RED are non-stock items — Minimum quantities may apply — Contact HYDAC for information and availability